

# City of Sanibel Speed Limit Reduction Discussion



Sanibel City Council

May 5, 2026

# East Periwinkle Way - Existing Posted Speed Limits



35 mph

30 mph

20 mph



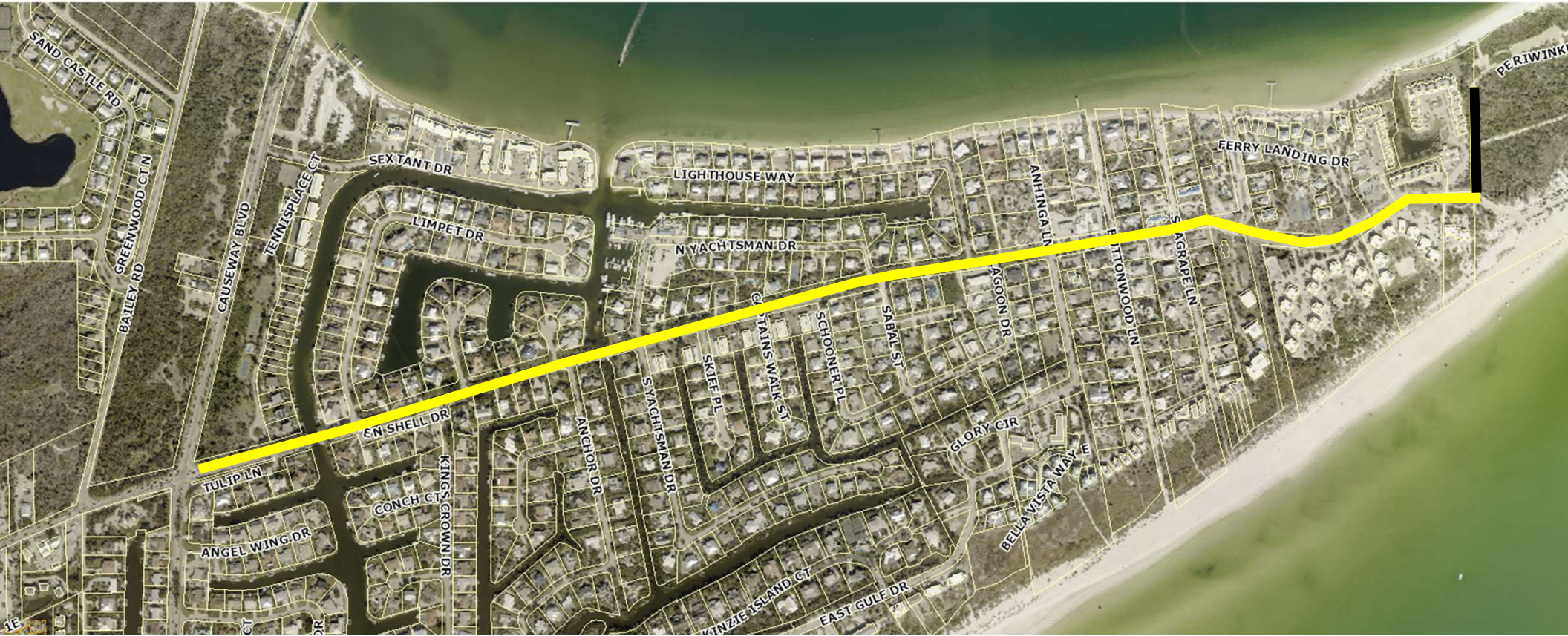
E. Periwinkle Way @ Sanibel Island Beach Club



E. Periwinkle Way @ Lighthouse Beach Park Access Rd.

# East Periwinkle Way – Option 1

Periwinkle Way between Causeway Blvd. and Lighthouse Beach Park – Speed Limit Change From 35 mph to 25 mph

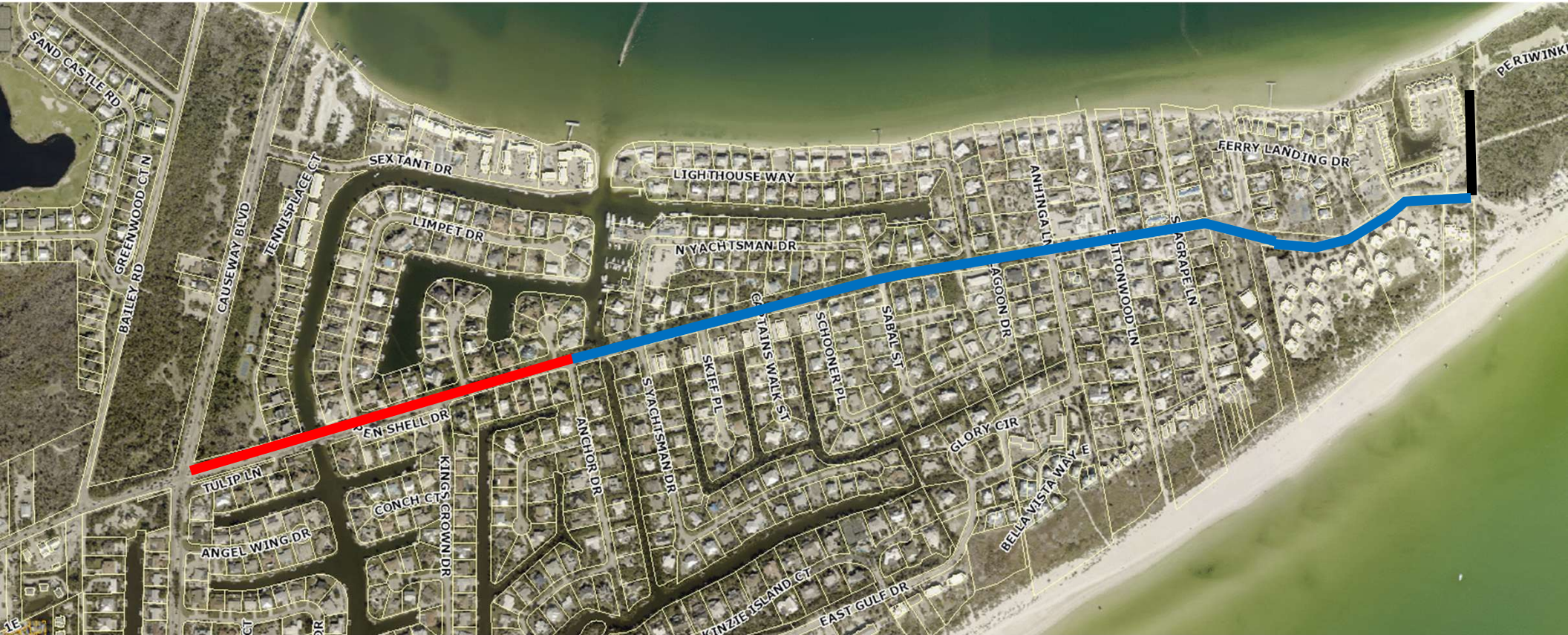


25 mph

20 mph

# East Periwinkle Way – Option 2

Periwinkle Way between Causeway Blvd. and Anchor Dr. – Speed Limit Change From 35 mph to 25 mph



25 mph

35 mph

30 mph

20 mph

# East Periwinkle Way – Option 3

Periwinkle Way between Causeway Blvd. and Anchor Dr. – Speed Limit Change From 35 mph to 25 mph



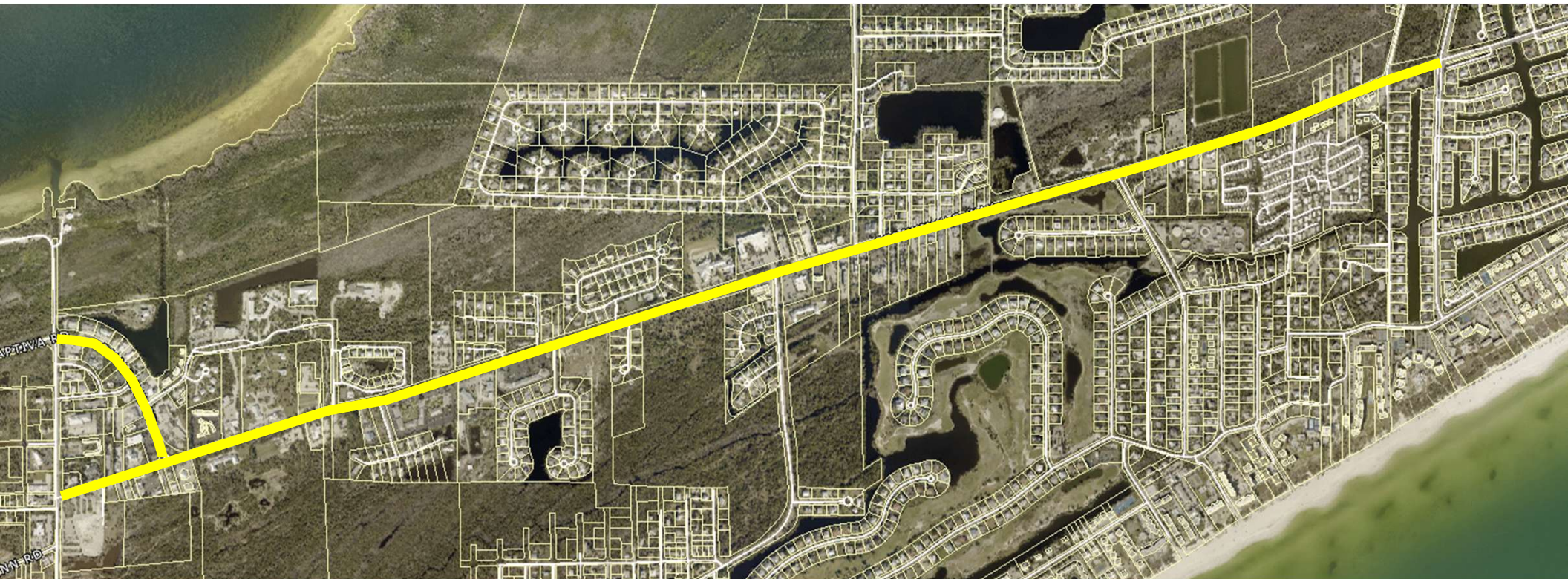
25 mph

35 mph

30 mph

20 mph

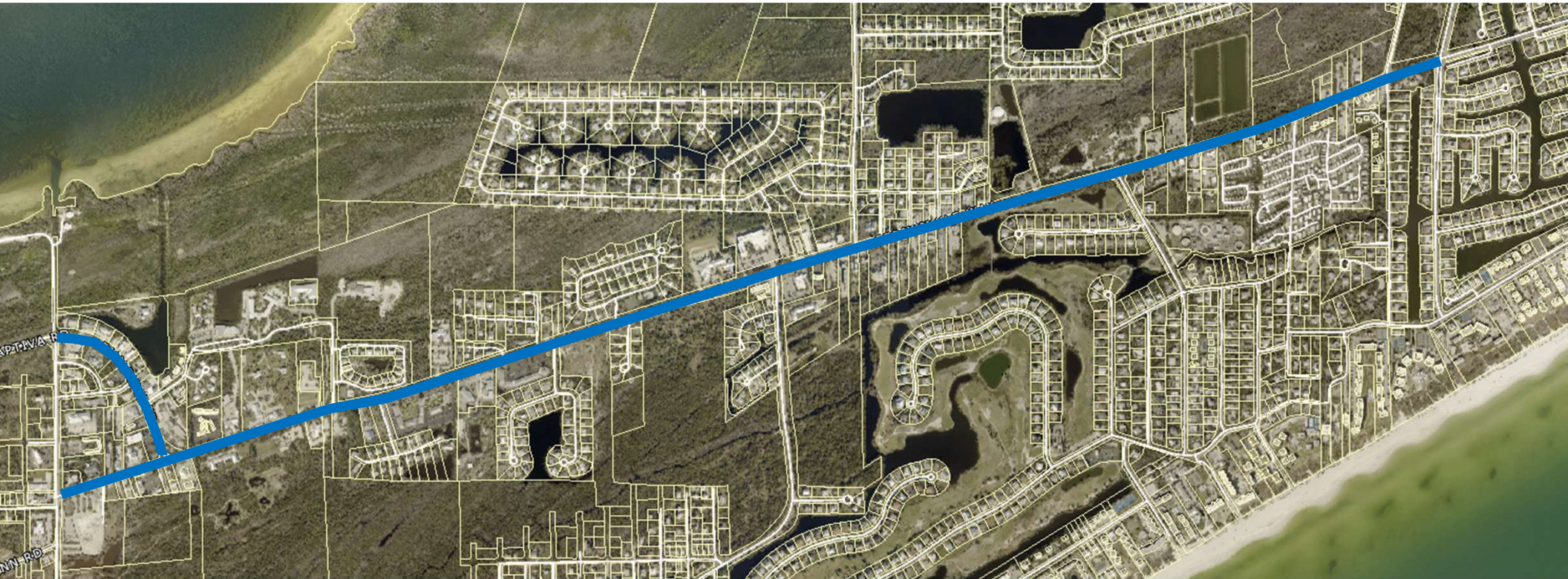
# Periwinkle Way and Palm Ridge Rd. - Existing Posted Speed Limits



35 mph

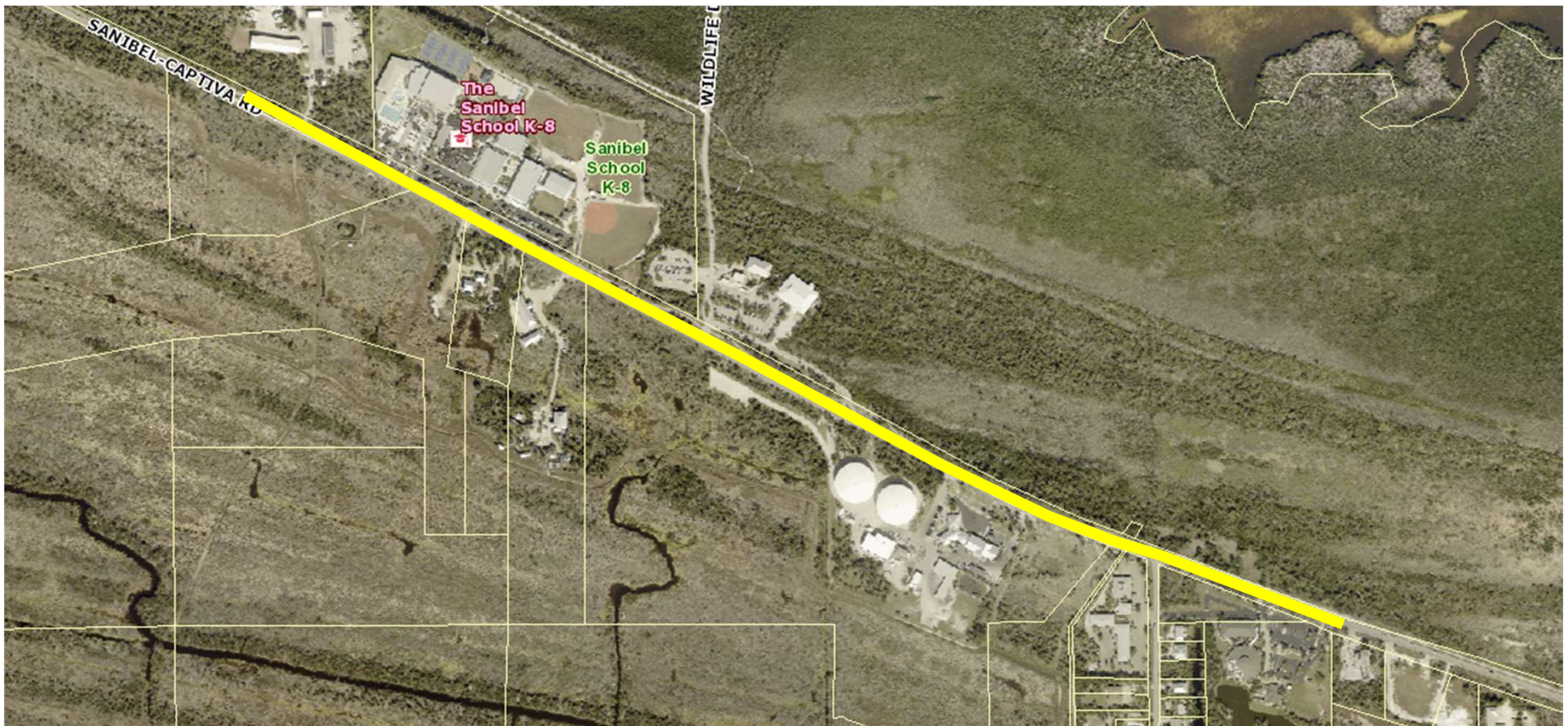
## Periwinkle Way – Option 1

Periwinkle Way between Causeway Blvd. and Tarpon Bay Rd. – Speed Limit Change From 35 mph to 30 mph  
Palm Ridge Rd. Change?



30 mph

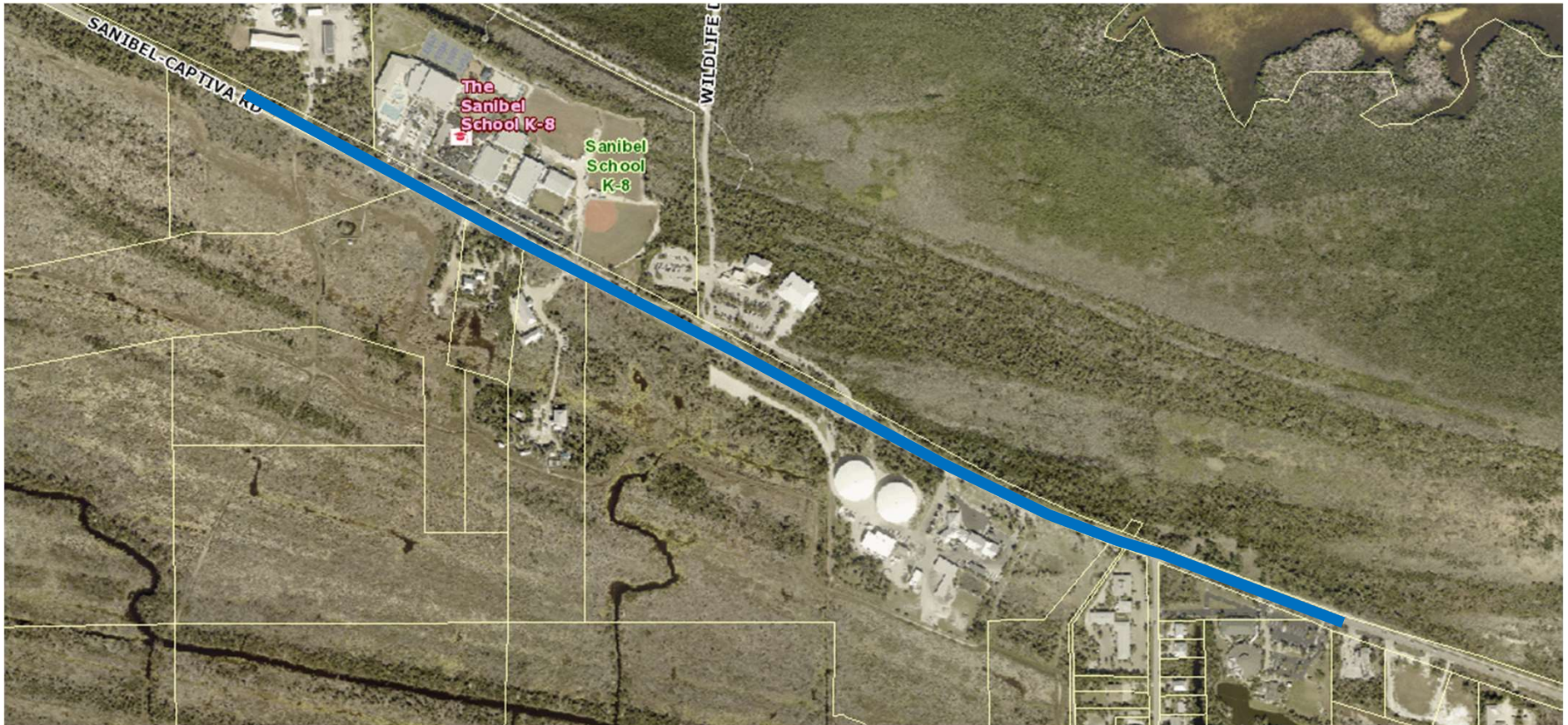
## Sanibel-Captiva Rd. – Existing Posted Speed Limits



35 mph

# Sanibel-Captiva Rd. – Option 1

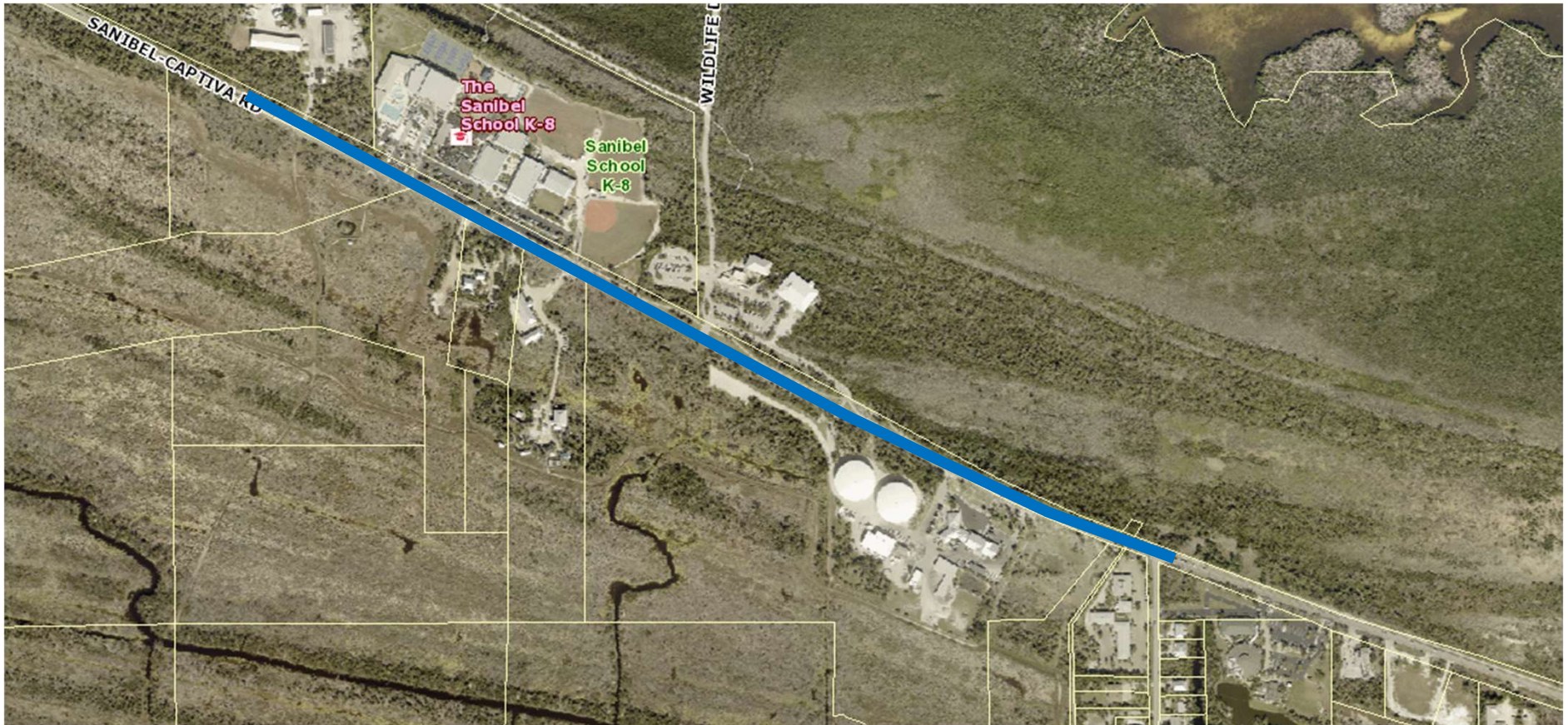
Sanibel- Captiva Rd. between a point near the church to the westerly edge of the Sanibel School speed zone  
Speed Limit Change From 35 mph to 30 mph



30 mph

## Sanibel-Captiva Rd. – Option 2

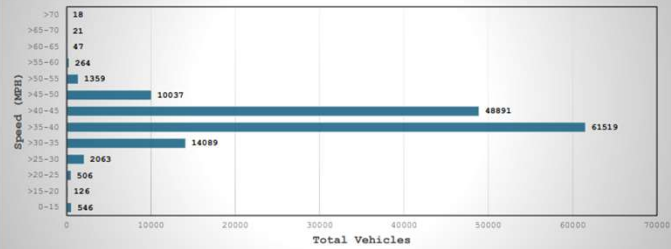
Sanibel- Captiva Rd. between Rabbit Road to the westerly edge of the Sanibel School speed zone  
Speed Limit Change From 35 mph to 30 mph



30 mph

# Speed Results

Sanibel Captiva Road East of Gulf Pines Drive Speed Data

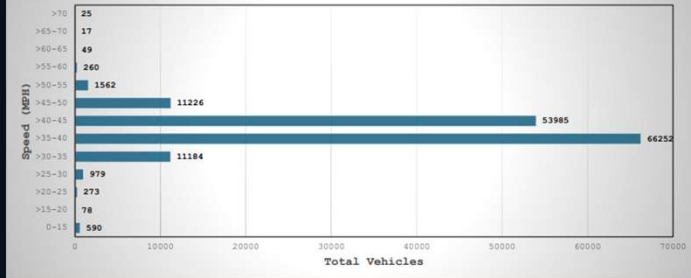


85<sup>th</sup> Percentile: 42 mph  
Speed Limit: 35 mph



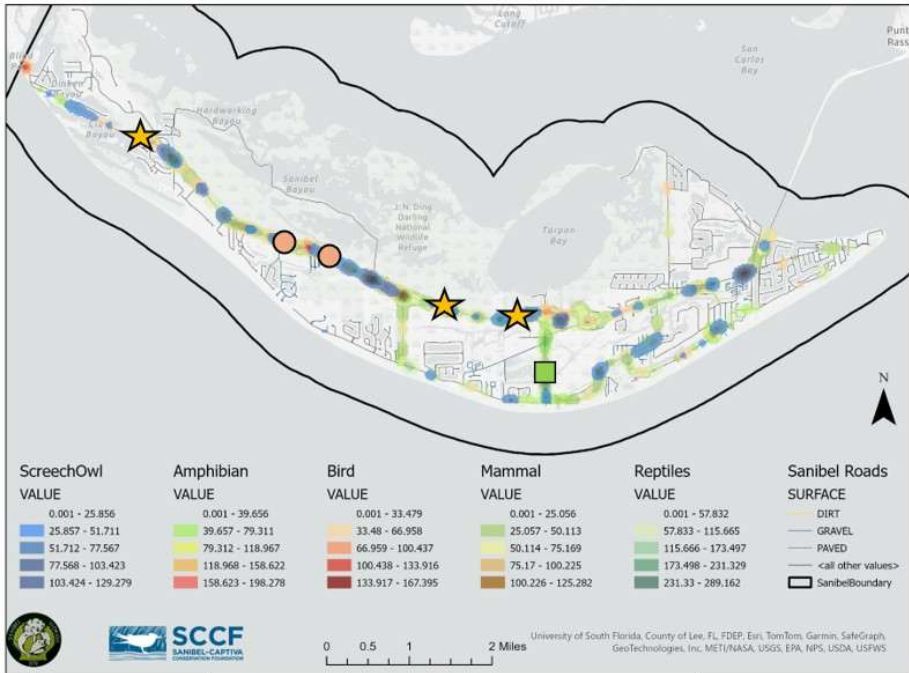
# Speed Results

Sanibel Captiva Road East Rabbit Road Speed Data



85<sup>th</sup> Percentile: 43 mph  
Speed Limit: 35 mph

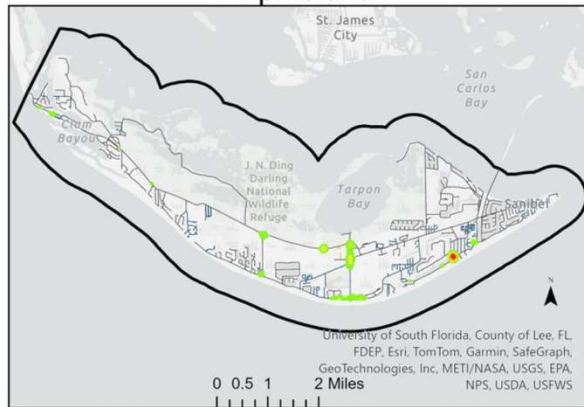




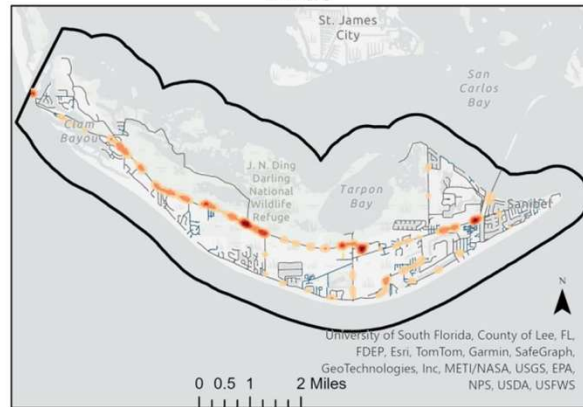
- ★ Large Wildlife Corridor Sign (Star) – 4x Total
- Small Bobcat Sign (Circle) – 2x Total
- Small Alligator Sign (Square) – 2x Total



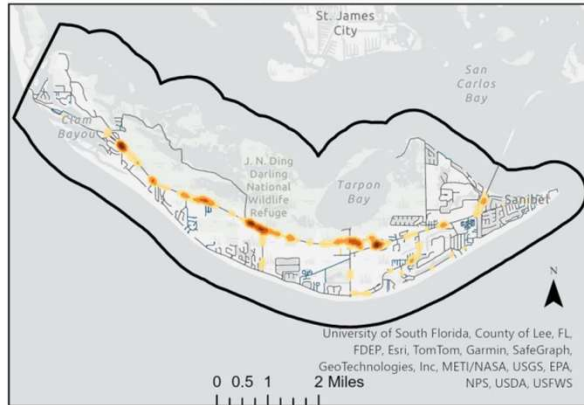
### Amphibians



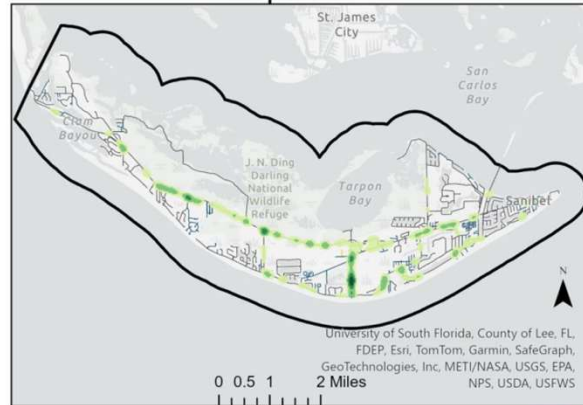
### Birds



### Mammals



### Reptiles

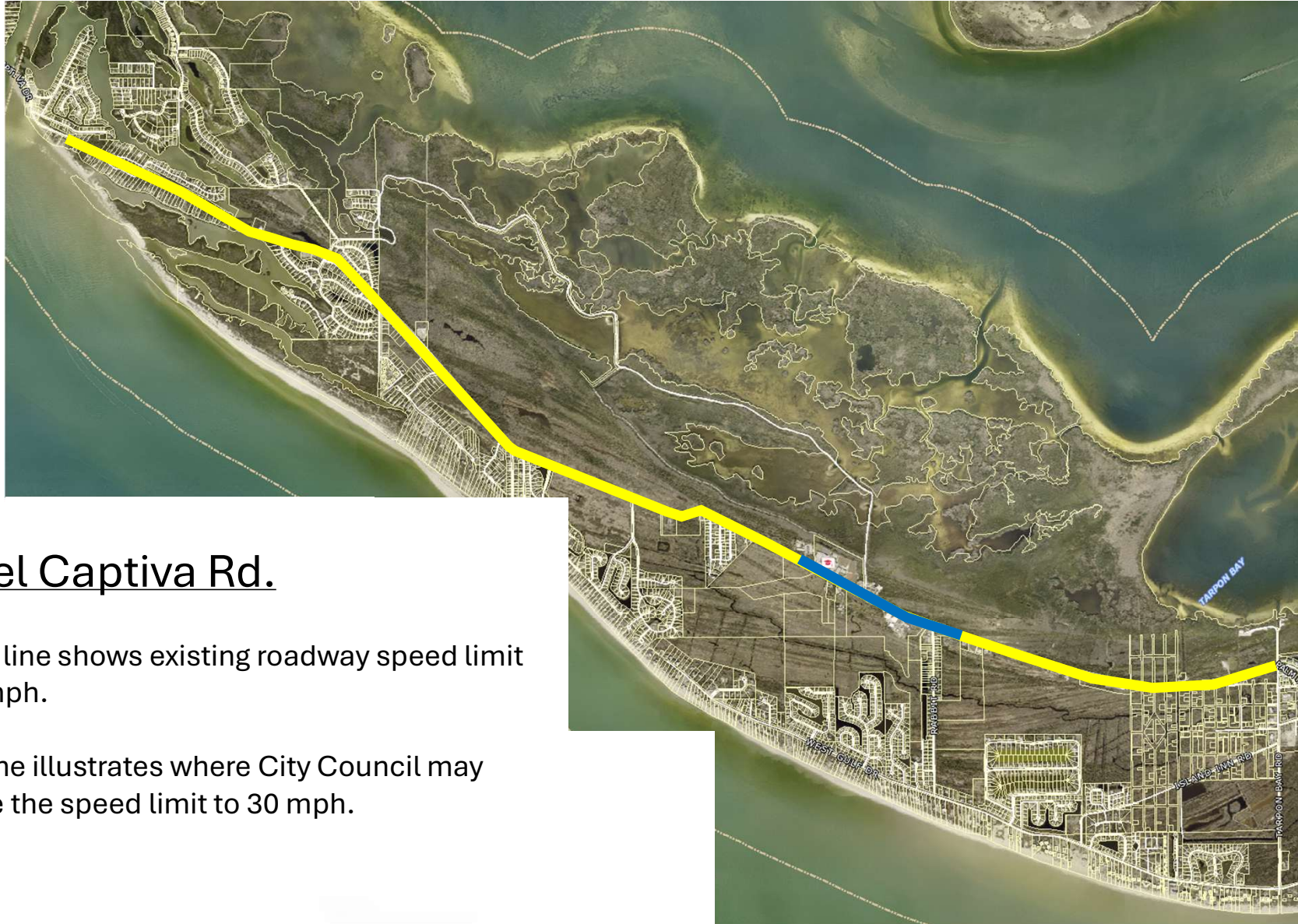


# Formalizing Existing Speed Limits Through Ordinance



Sanibel City Council

May 5, 2026

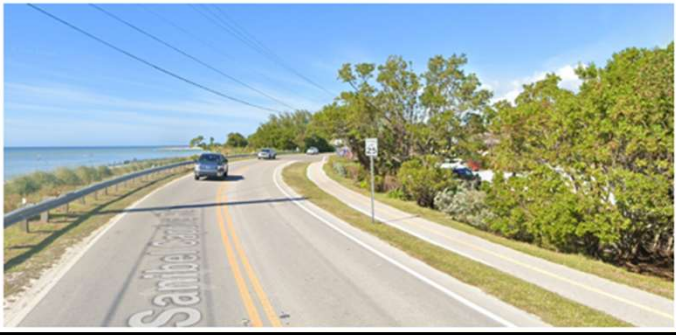


## Sanibel Captiva Rd.

- Yellow line shows existing roadway speed limit is 35 mph.
- Blue line illustrates where City Council may reduce the speed limit to 30 mph.

# Sanibel Captiva Rd. - Santiva

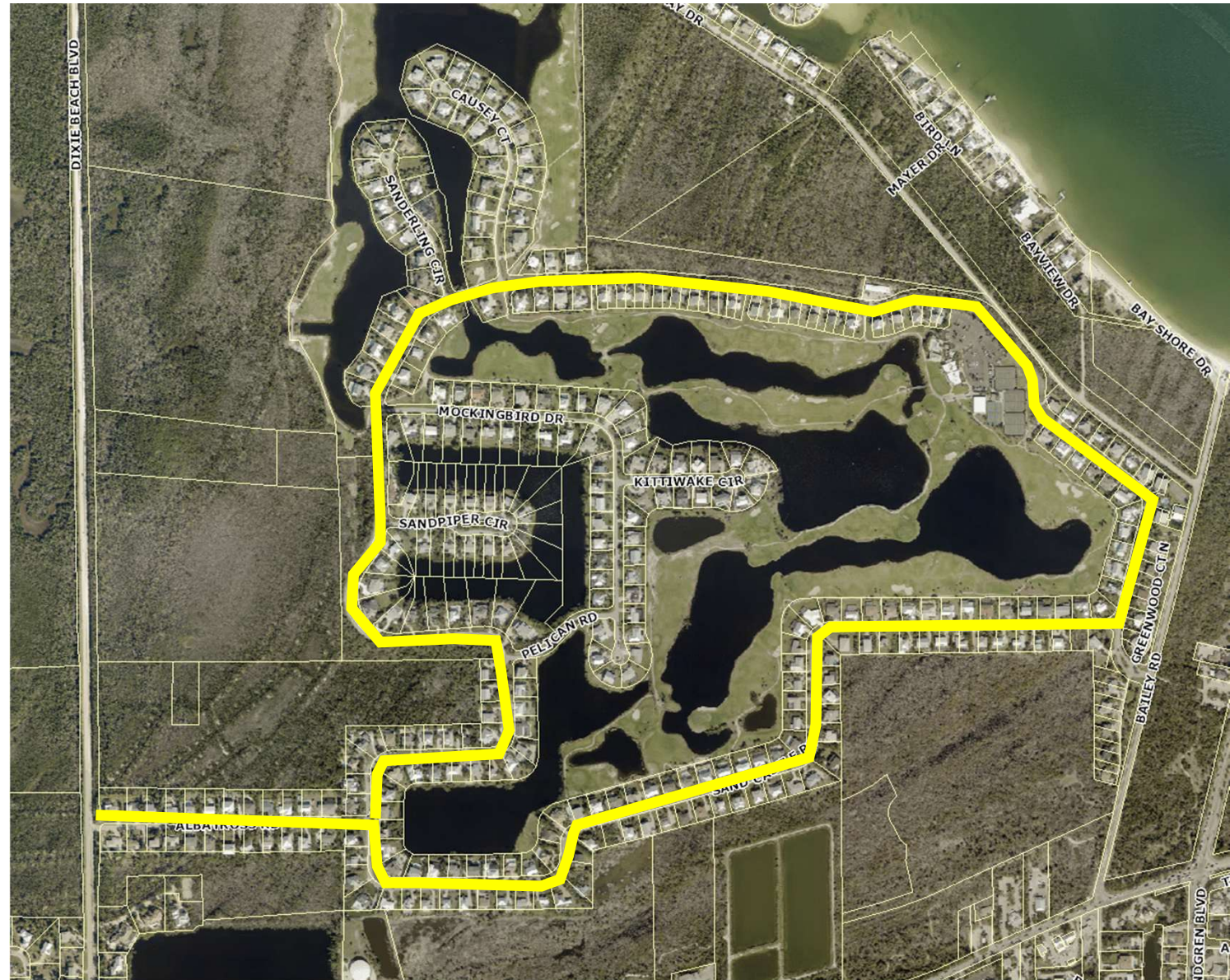
- Yellow line shows existing roadway speed limit is 25 mph.
- *Note – Captiva Rd. has posted speed limits of 25 mph and 30 mph.*





# The Dunes Subdevelopment

- Yellow line shows existing roadway speed limit of 20 mph.
  - Albatross Rd.
  - Sand Castle Rd.
- Established January 6, 2015, by the City Council.



# The Sanctuary Subdevelopment

- Yellow line shows existing roadway speed limit of 20 mph.
  - Baltusrol Ct.
  - Troon Ct.
  - Wulfert Rd.
- Established April 1, 2025, by the City Council.





## Advisory Signs, etc.

- Sample of advisory sign that may be approved by the City Manager.
- Legion's Curve, Sanibel-Captiva Rd.

