

LEGAL NOTICE OF PUBLIC HEARING

THIS IS NOT A BILL

July 18, 2025

RE: City of Sanibel Public Hearing to make a final decision on whether to establish the Wulfert Channel Area Dredging Assessment District and levy special assessments against property located within the Wulfert Channel Dredging Assessment District

Dear Property Owner:

The City of Sanibel expressed its intent to establish a one-time assessment to fund dredging for the special benefit of the Wulfert Channel Area Dredging Assessment District (the "Assessment District"). An Assessment District map is enclosed for your reference. The Sanibel City Council has established the date of **Tuesday, August 19, 2025, at 9:10 a.m.**, in **MacKenzie Hall, 800 Dunlop Road, Sanibel, Florida** as the public hearing date at which to consider the propriety and advisability of establishing and implementing the Assessment District; and, if so, to further determine the cost of such dredging-related efforts, the manner of payment for such efforts, and the amount of such costs to be assessed against each property within the Assessment District.

As part of the public hearing, the Sanibel City Council will consider the adoption of a Rate Resolution to impose an assessment against assessed property located within the Assessment District for the Fiscal Year October 1, 2025, through September 30, 2026. The assessment is anticipated to be \$2,556.47 for each property with an existing dock, mooring space, etc., or the right to construct such dock or mooring space, which would result in an assessment for properties within the Assessment District of \$2,556.47 if paid in lump sum total. Installments of 2, 3, 4, or 5 annual payments, plus interest of 4.5% compounded annually, are also anticipated as payment options. The various proposed payment options are enclosed for your reference.

All affected property owners and interested parties have the right to appear at the hearing and to file written comments or objections with the City Council before the adjourned time of the public hearing. In accordance with the Americans with Disabilities Act, anyone needing special accommodations to participate in this process should contact the City Clerk's office at (239) 472-3700 at least 24 hours prior to the hearing.

Please direct all other questions or correspondence to:

Finance Department
City of Sanibel
800 Dunlop Road
Sanibel, Florida 33957
(239) 472-9615

Sincerely,

CITY OF SANIBEL

Enclosure: Exhibit A - Map of Assessment District
Exhibit B - Extended Payment Plan



City of Sanibel

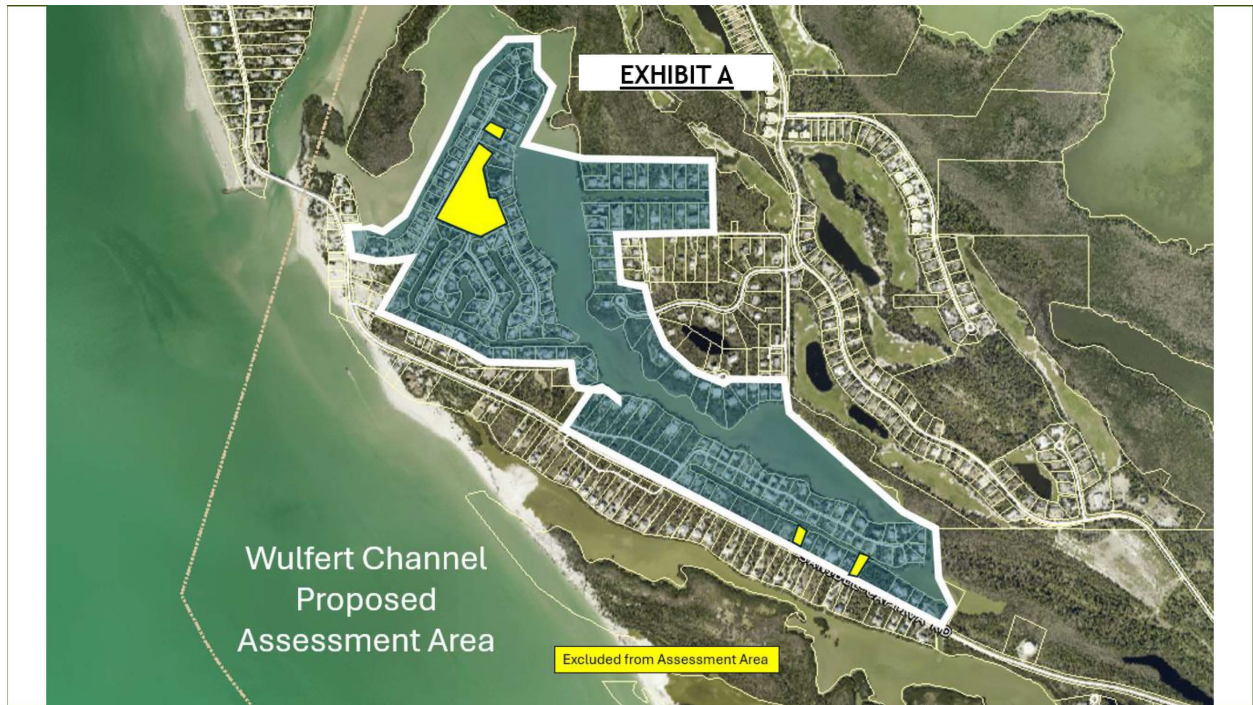
800 Dunlop Road
Sanibel, Florida 33957-4096

www.mysanibel.com

AREA CODE - 239

ADMINISTRATION/LEGISLATIVE	472-3700
CITY COUNCIL	472-4135
COMMUNITY SERVICES	
BUILDING	472-4555
PLANNING	472-4136
PUBLIC WORKS	472-6937
UTILITIES	472-3179
FINANCE	472-9615
IT SUPPORT	472-3700
LEGAL	472-4359
NATURAL RESOURCES	472-3700
POLICE	472-3111
EMERGENCY MANAGEMENT	472-3111
RECREATION	472-0345
CENTER4LIFE	472-5743

EXHIBIT A



The following is a description of the Wulfert Channel Dredging Assessment District:

Any and all land adjoining, abutting or contiguous to waters generally known as Wulfert Channel, Sunset Bay and Dinkins Bayou, or with legal access rights within that area generally bounded by Starling Way and Dinkins Bayou to the north, Wulfert Channel and Blind Pass to the west, Pine Ave. and Sanibel Captiva Rd. to the south, and Dinkins Bayou and Los Colony Rd. to the east, excluding properties without development rights

EXHIBIT B

Revised Wulferd Channel Area Dredging Assessment District Payment Options																			
	Assessment	Year 1 Payment	Balance	4.5% Interest	Balance	Year 2 Payment	Balance	4.5% Interest	Balance	Year 3 Payment	Balance	4.5% Interest	Balance	Year 4 Payment	Balance	4.5% Interest	Balance	Year 5 Payment	Total Payment
	Resident Payment Option 1- year Payment	2,556.47	0.00																2,556.47
	Resident Payment Option - 2-year Payment	2,556.47	1,278.24	57.52	1,335.76	1,335.76	0.00												2,613.99
	Resident Payment Option - 3-year Payment	2,556.47	852.16	76.69	1,781.01	890.50	890.50	40.07	930.58	930.58									2,673.24
	Resident Payment Option - 4-year Payment	2,556.47	639.12	86.28	2,003.63	667.88	1,335.76	60.11	1,395.66	697.93	697.93	31.41	729.34	729.34					2,734.27
	Resident Payment Option - 5-year Payment	2,556.47	511.29	92.03	2,137.21	534.30	1,602.91	72.13	1,675.04	588.35	1,116.69	50.25	1,166.94	583.47	583.47	26.26		608.73	2,797.14