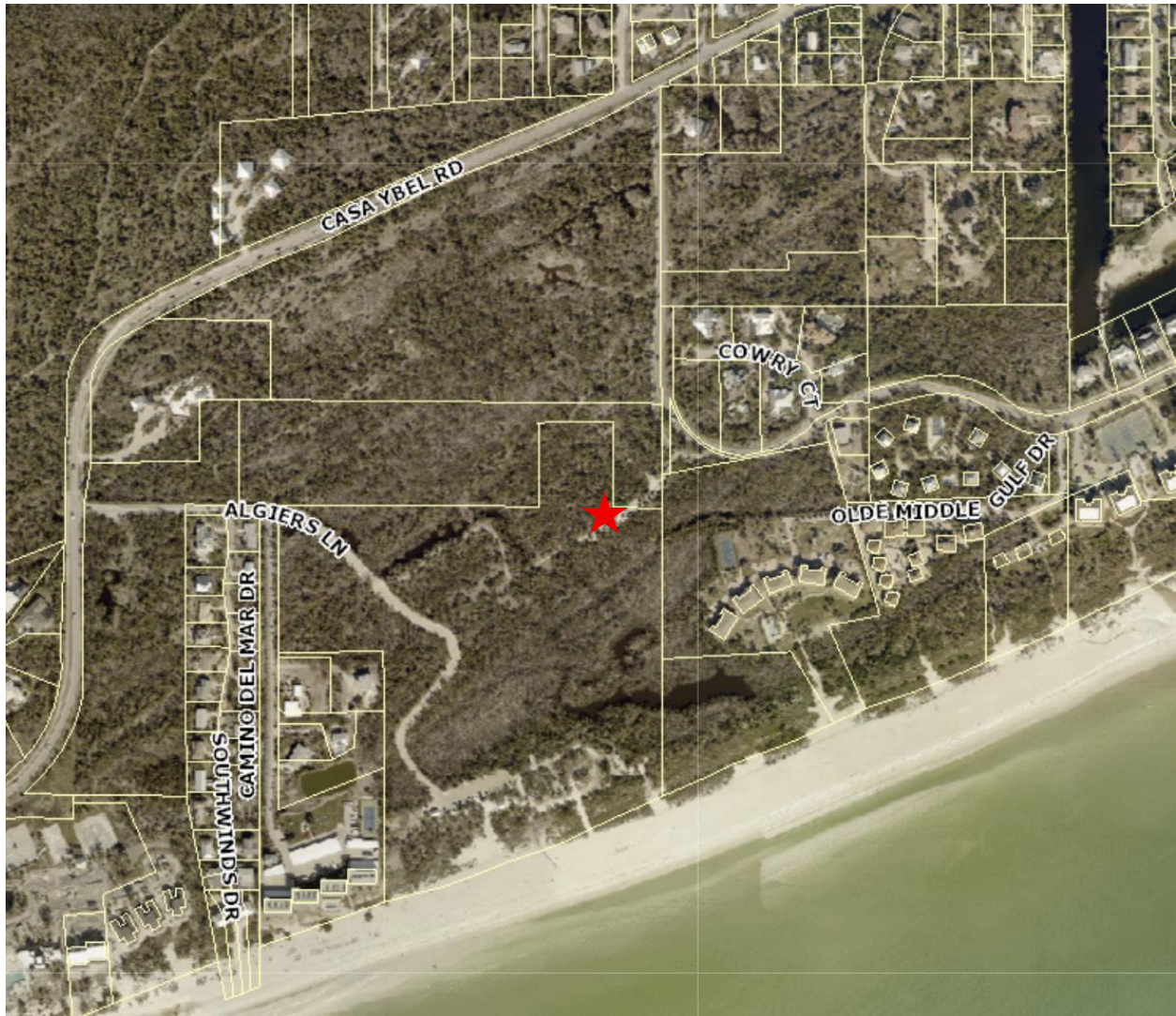


Nominated Structure or Location: Sanibel Cemetery

| Sec. 98-34. Criteria for listing on the local historic register | |
|--|---|
| Any site, improvement, or structure may be listed on the local register, as historic, according to the provisions of this chapter, if it meets one or more of the following criteria: | |
| (1) <i>Historical importance.</i> The site, improvement, structure, has character, interest or value as a part of the development, heritage or cultural characteristics of the community; is associated with the events that have made a significant contribution to the broad pattern of local history; is associated with the lives of persons significant to our past; it exemplifies the cultural, political, economic, social, historic and prehistoric heritage of the community; or may have yielded or may be likely to yield information on recorded history. | The Sanibel Cemetery contains graves of pioneer settlers and homesteaders. The land was donated as a public burial cemetery in 1888 by Reverend Geroge Barnes, a traveling evangelist. The Sanibel Cemetery was part of Barnes' homestead. It contains at least 31 graves, many unmarked. |
| (2) <i>Architectural importance.</i> The improvement or structure portrays the environment of a group of people in an area of history characterized by a distinctive architectural style; it embodies those distinguishing characteristics of an architectural type, period or method; it is the work of an architect or master building whose individual work has influenced the development of the area; or it contains elements of architectural design, detail, materials or work of outstanding quality which represents a significant innovation. | N/A |
| (3) <i>Geographic importance.</i> The site, improvement or structure, because of its location or other distinctive area, should be developed or preserved according to a plan based on historic, cultural or architectural motif; or due to its unique location or singular physical characteristics represents an established and familiar visual feature of the area, community, or state. | This is the original location of the Sanibel Cemetery. |
| (4) <i>Archaeological importance.</i> The site, because of its content or presumed content, should be preserved because it exemplifies the cultural, political, economic, social, historic or prehistoric heritage of the community or area, or it may have yielded or may be likely to yield information on recorded history. | N/A |

Nominated Structure or Location: Sanibel Cemetery

| Sec. 98-35. Criteria for evaluation of historically significant structures as historic landmark. | |
|---|---|
| An improvement or structure may be listed as an historic landmark if it meets three or more of the following criteria: | |
| (1) The improvement or structure has retained its integrity either in original execution, materials, design, setting, or association. | Yes, this is the original location of the Sanibel Cemetery. |
| (2) The improvement or structure is at least 50 years old. | Yes, established in 1888. The last burial was in 1967. |
| (3) The improvement or structure has outstanding historical, cultural or architectural significance to the community. | Yes, the Sanibel cemetery represents the early settlers and homesteaders. |
| (4) The improvement or structure exemplifies the broad cultural, economic, and social history of southwest Florida. | Yes, the Sanibel cemetery represents the early settlers and homesteaders. |
| (5) The improvement or structure has distinguishing characteristics of an architectural style representative of an historic or unique period or method of construction. | N/A |



★ = Location of Sanibel Cemetery

Parcel STRAP #36-46-22-T1-00007.0000

2001 Algiers Lane

