

City of Sanibel

Speed Limit Reduction Discussion

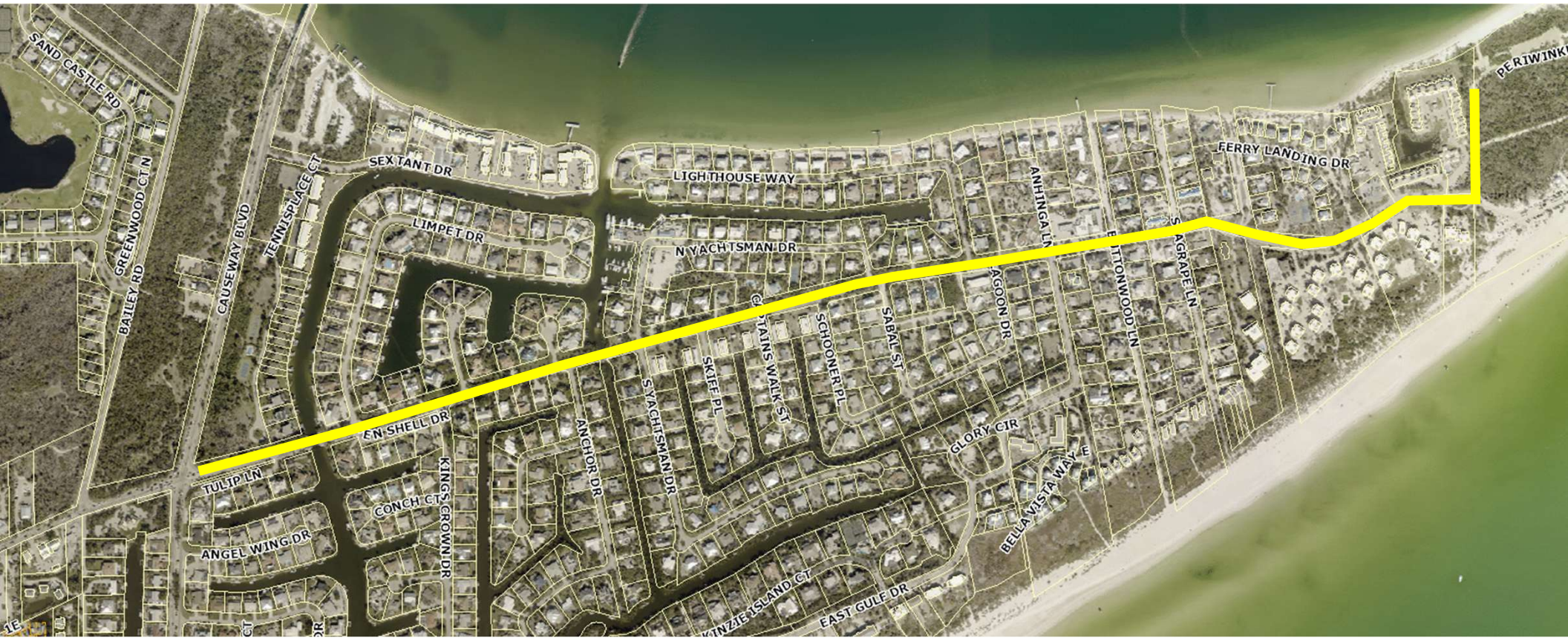
E. Periwinkle Way, Periwinkle Way, Rabbit Rd. San-Cap Rd. Between Rabbit Rd. and the Western Boundary of the Sanibel School Speed Zone



Sanibel City Council

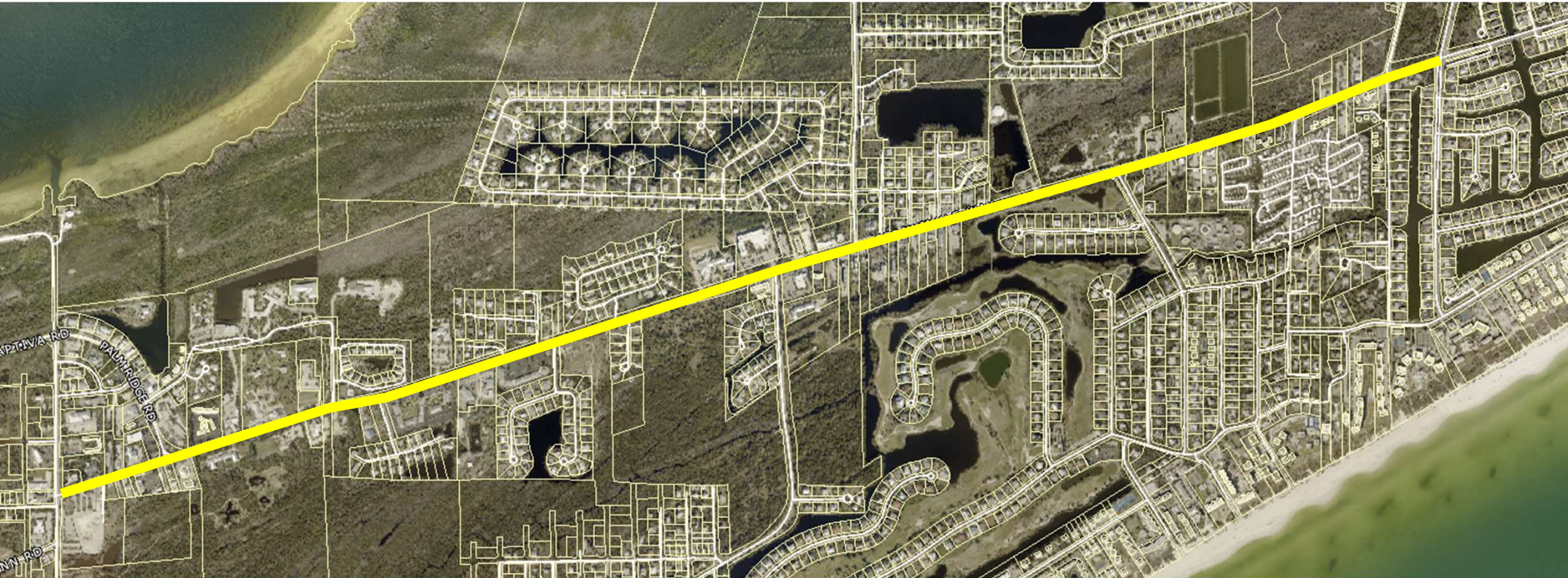
April 21, 2026

Recommendation 1



East Periwinkle Way from Causeway Blvd. to Lighthouse Beach Park – Speed Limit Change From 35 mph to 25 mph

Recommendation 2



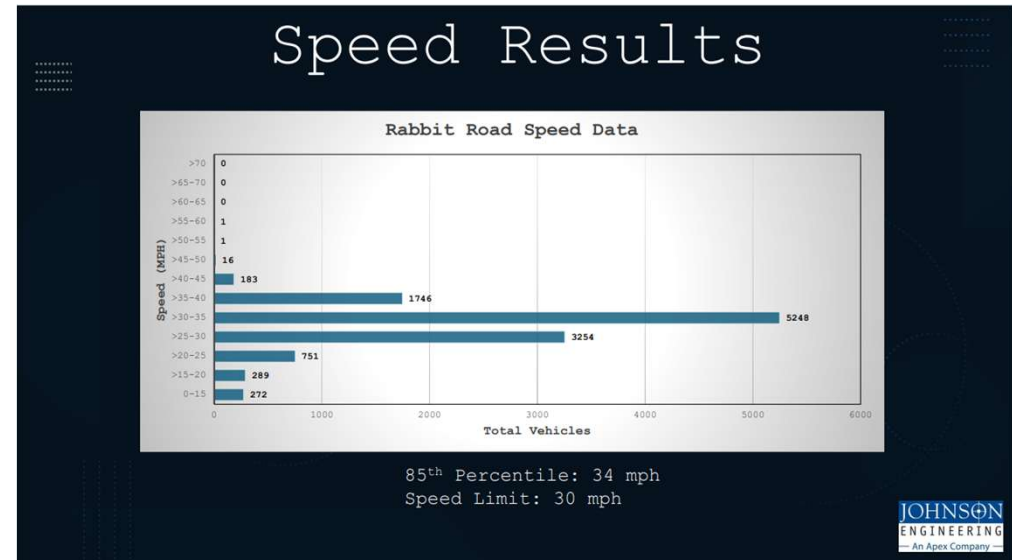
Periwinkle Way between Causeway Blvd. and Tarpon Bay Rd. – Speed Limit Change From 35 mph to 30 mph

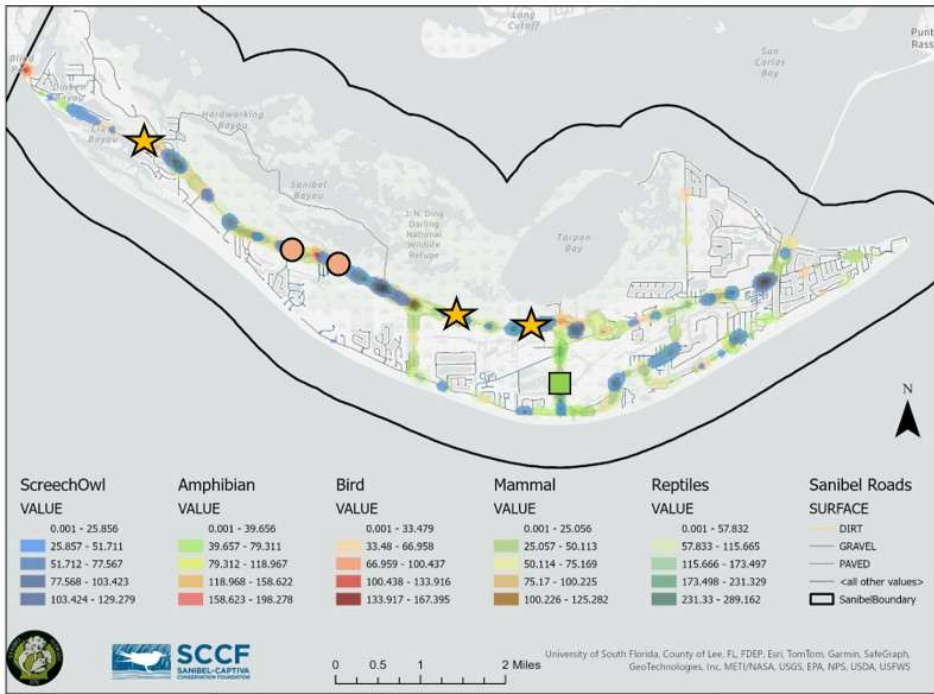


Discussion 1

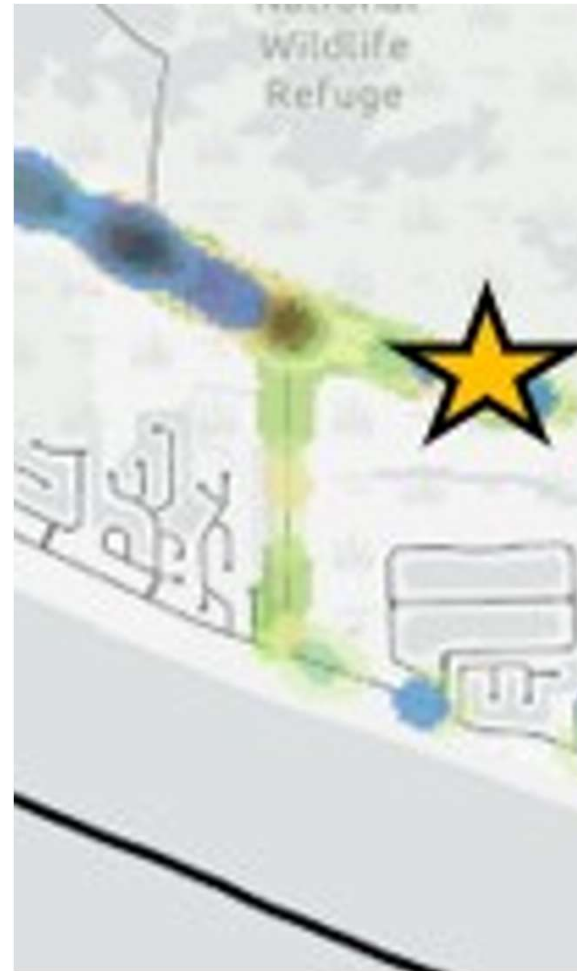
Does the City Council wish to reduce the speed limit on Rabbit Rd. between San-Cap Rd. and West Gulf Dr.?

- Current Speed Limit – 30 mph
- 85th Percentile – 34 mph

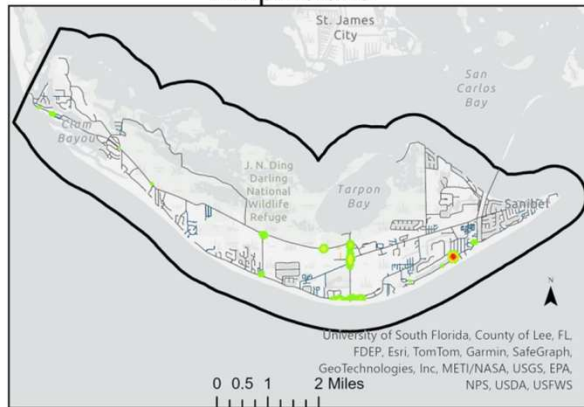




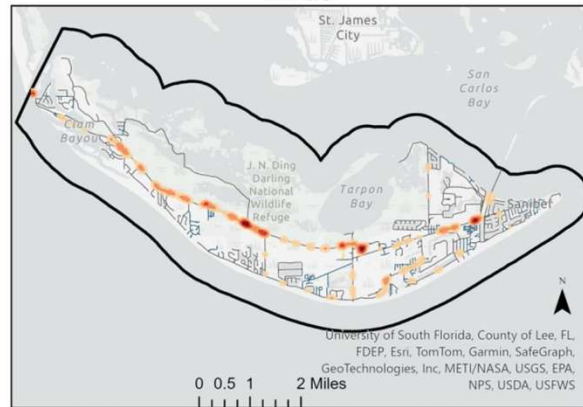
- ★ Large Wildlife Corridor Sign (Star) – 4x Total
- Small Bobcat Sign (Circle) – 2x Total
- Small Alligator Sign (Square) – 2x Total



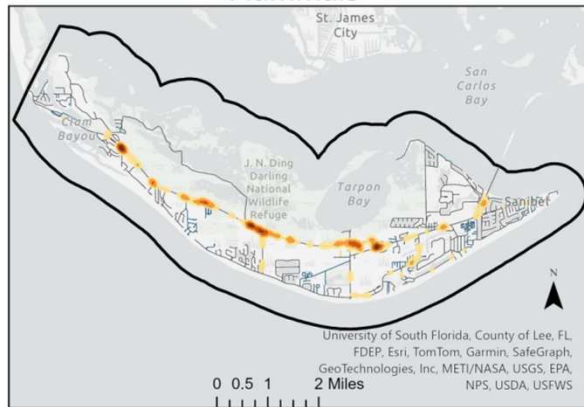
Amphibians



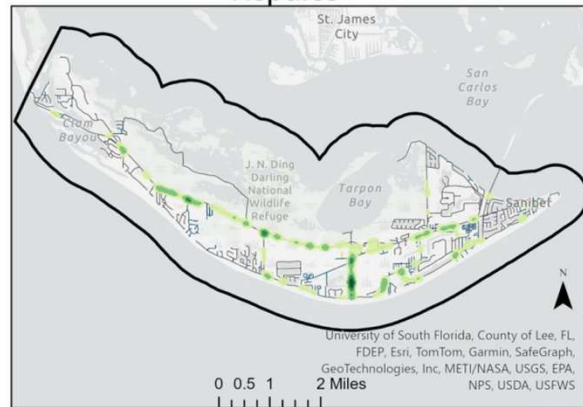
Birds



Mammals



Reptiles



Discussion 2

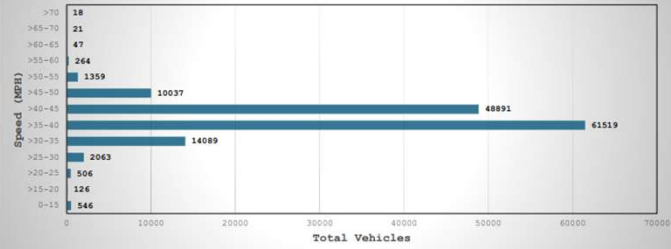
Does the City Council wish to reduce the speed limit on San-Cap Rd. between Rabbit Rd. and the western edge of the school speed zone?

- Current Speed Limit – 35 mph
- 85th Percentile – 42-43 mph



Speed Results

Sanibel Captiva Road East of Gulf Pines Drive Speed Data

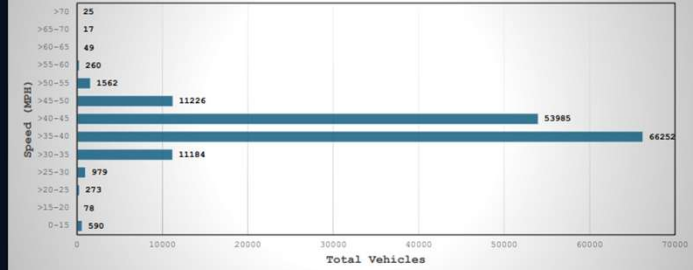


85th Percentile: 42 mph
Speed Limit: 35 mph



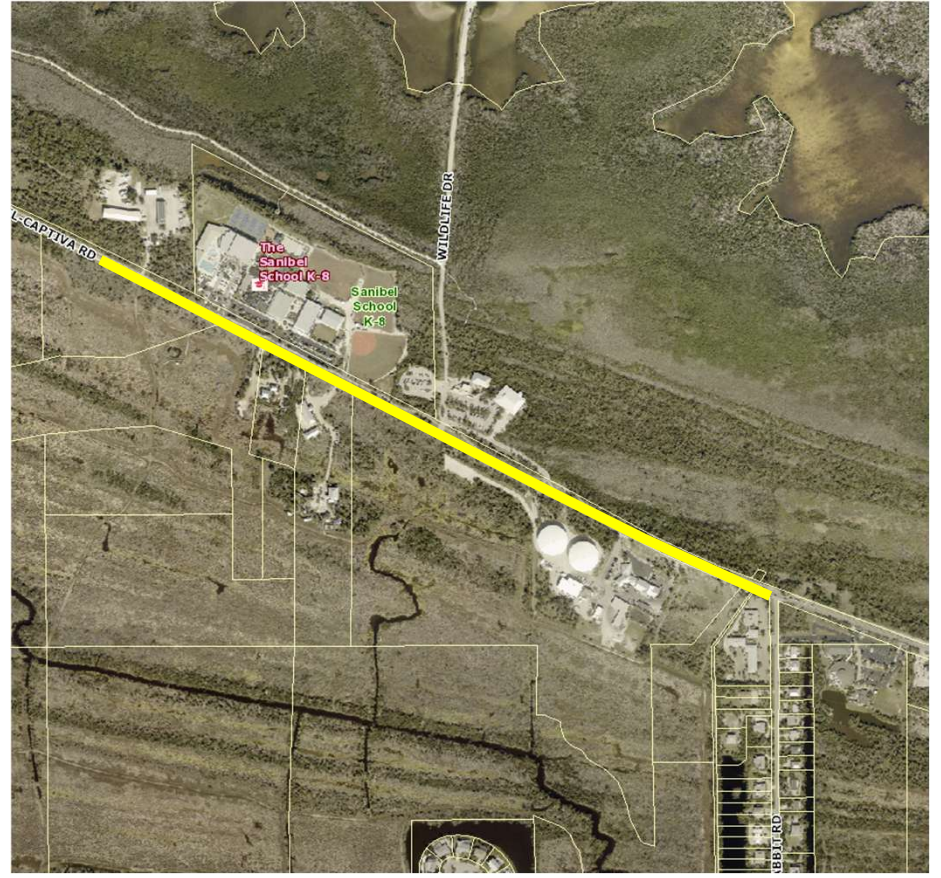
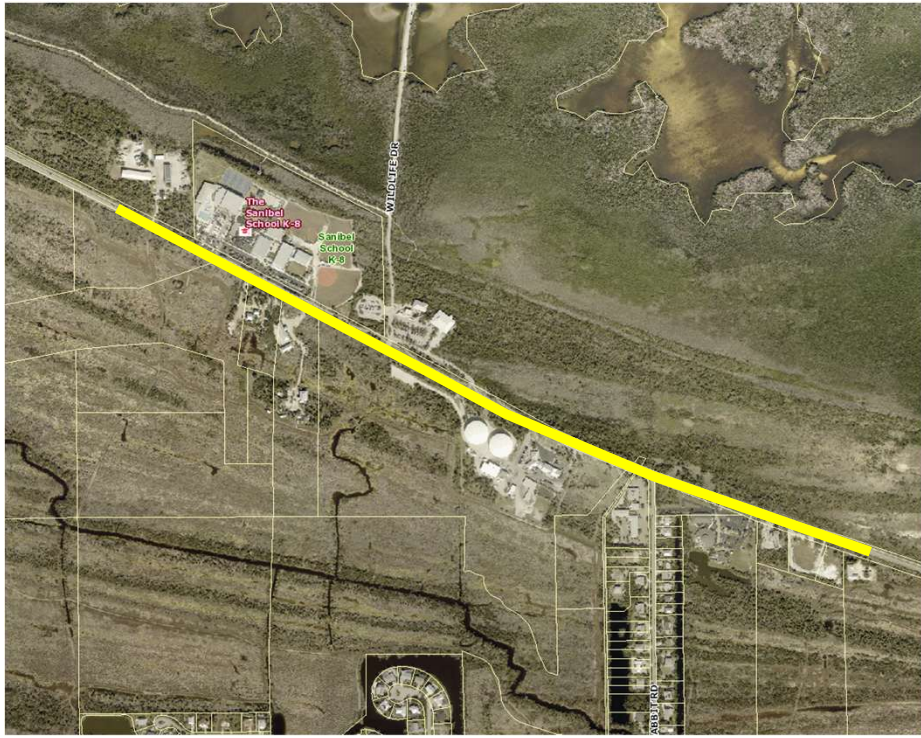
Speed Results

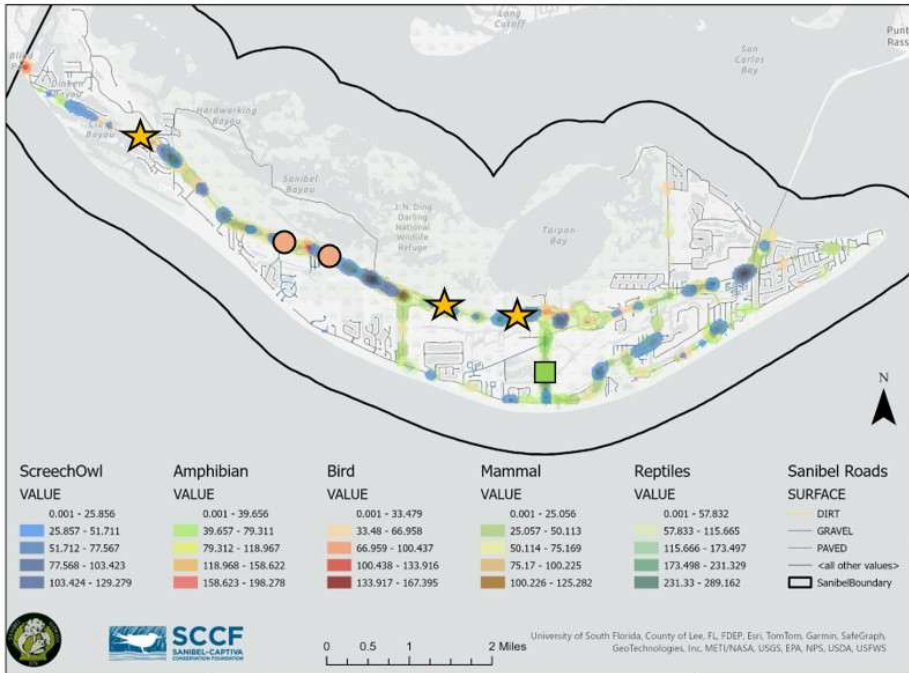
Sanibel Captiva Road East Rabbit Road Speed Data



85th Percentile: 43 mph
Speed Limit: 35 mph



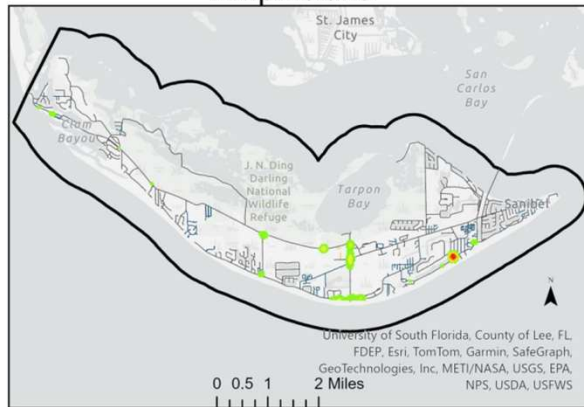




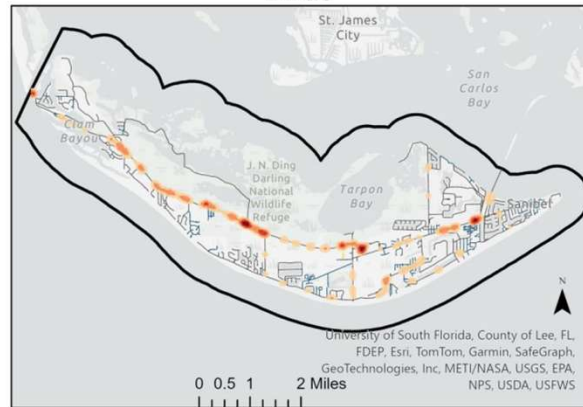
- ★ Large Wildlife Corridor Sign (Star) – 4x Total
- Small Bobcat Sign (Circle) – 2x Total
- Small Alligator Sign (Square) – 2x Total



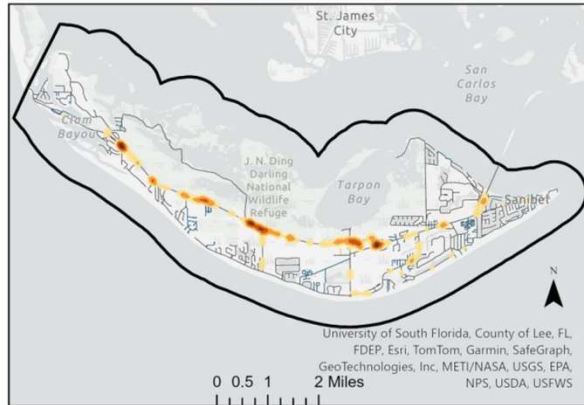
Amphibians



Birds



Mammals



Reptiles

