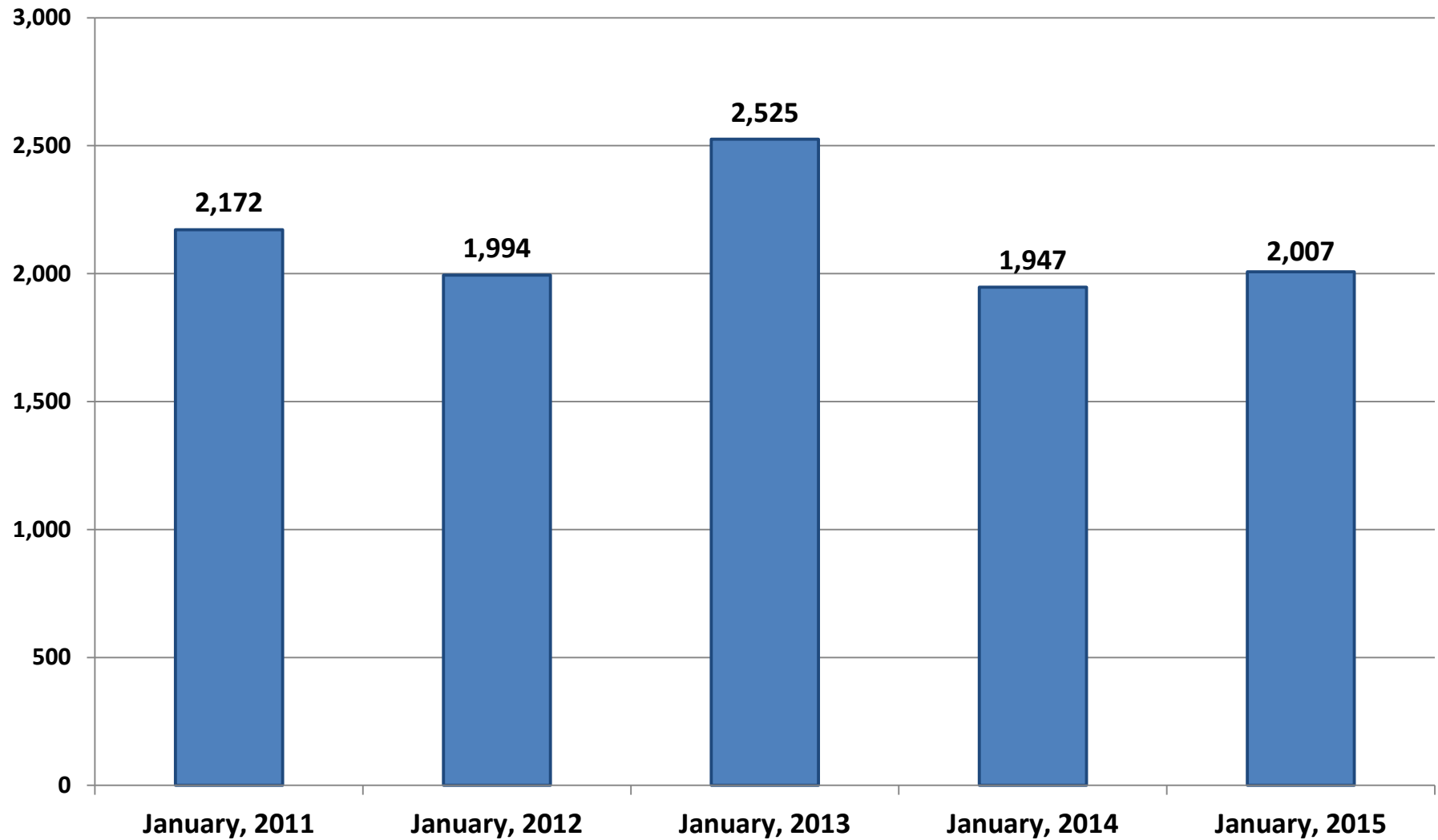
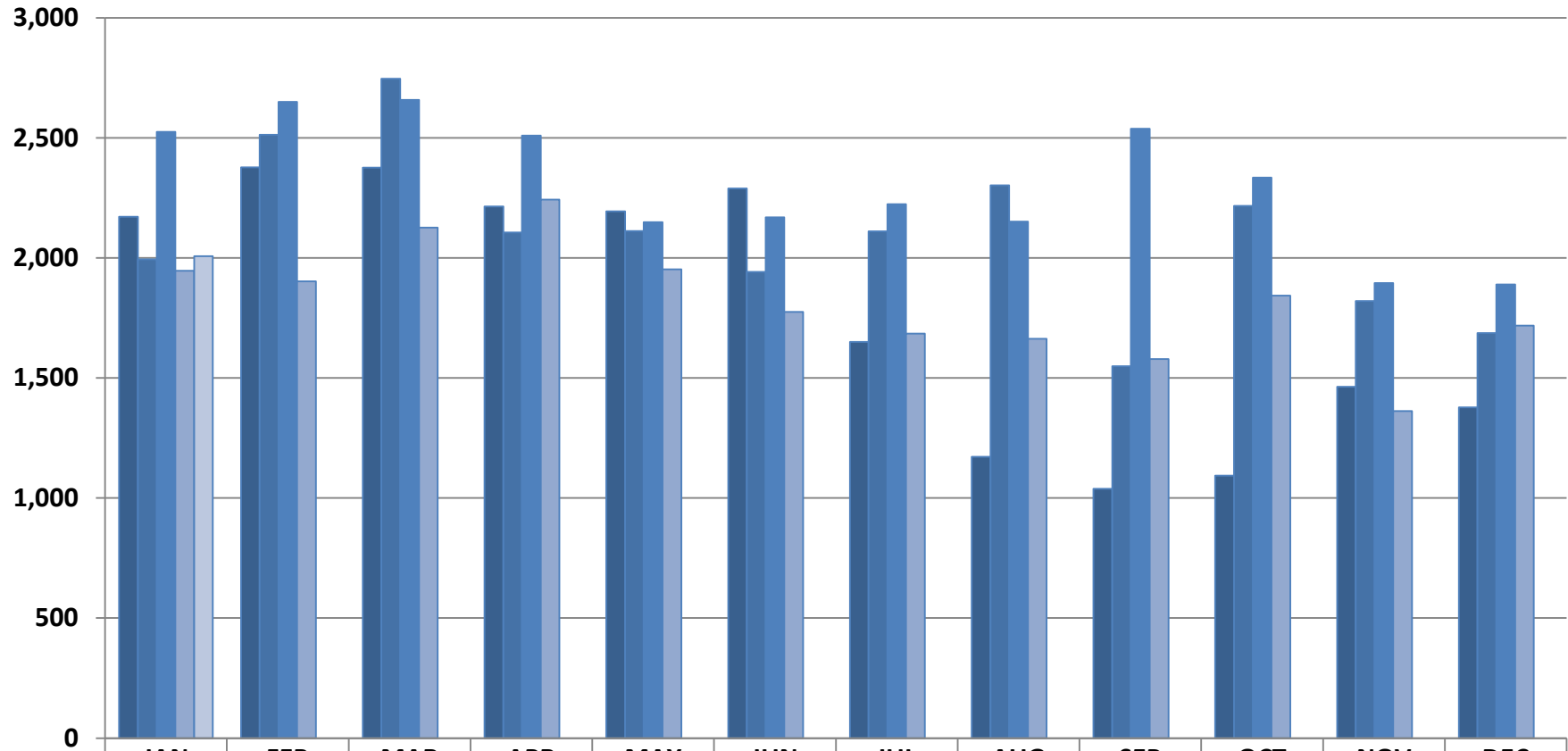


**Legislative Department
Monthly Phone Call Tracking
January, 2011 - January, 2015
Through January 31, 2015**



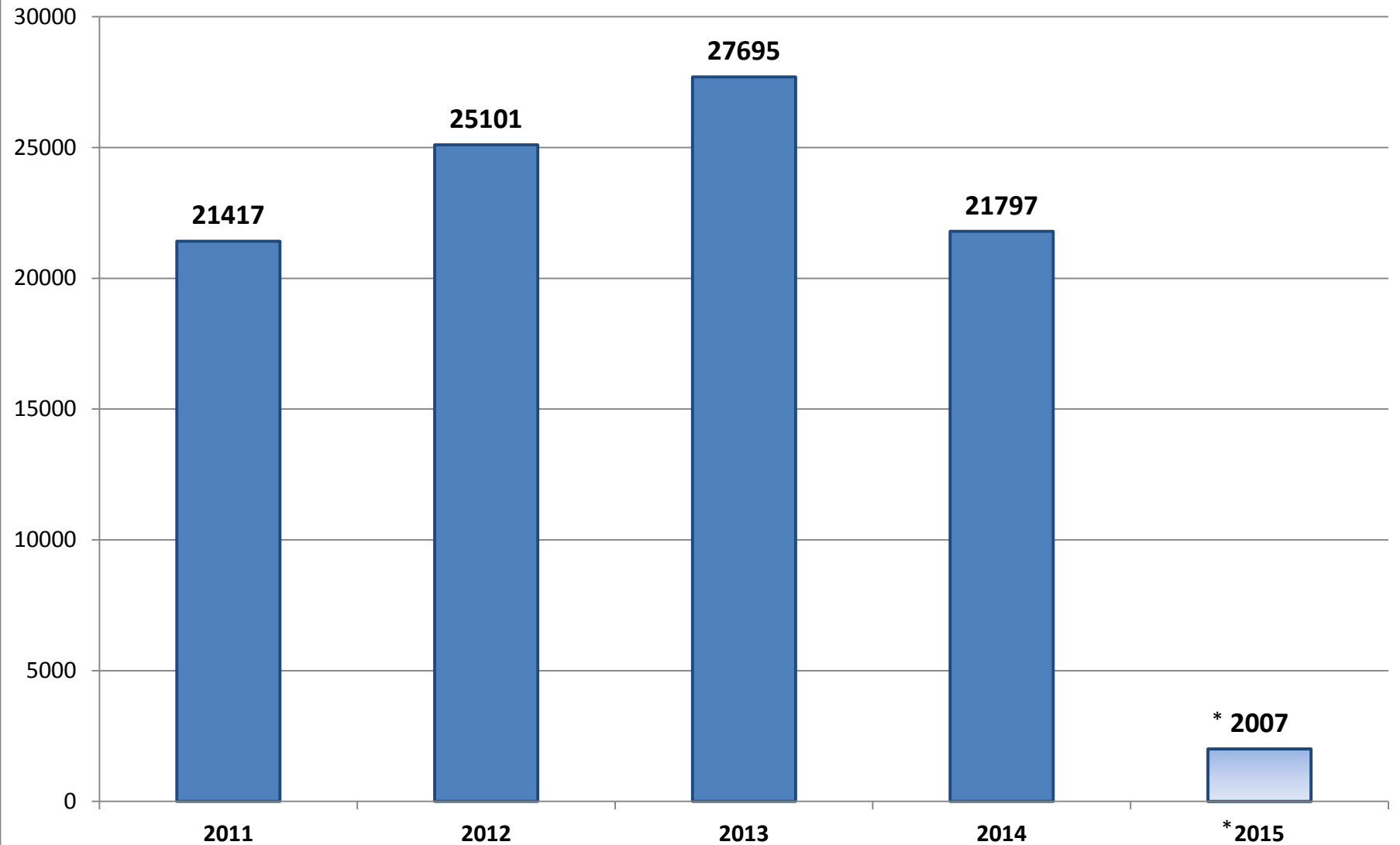
Legislative Department Monthly Phone Call Tracking

Through January 31, 2015

[illegible]

**Legislative Department
Annual Phone Call Tracking
*Through January 31, 2015**

*Partial Year



Information Calls

1/26/15 – 1/30/15

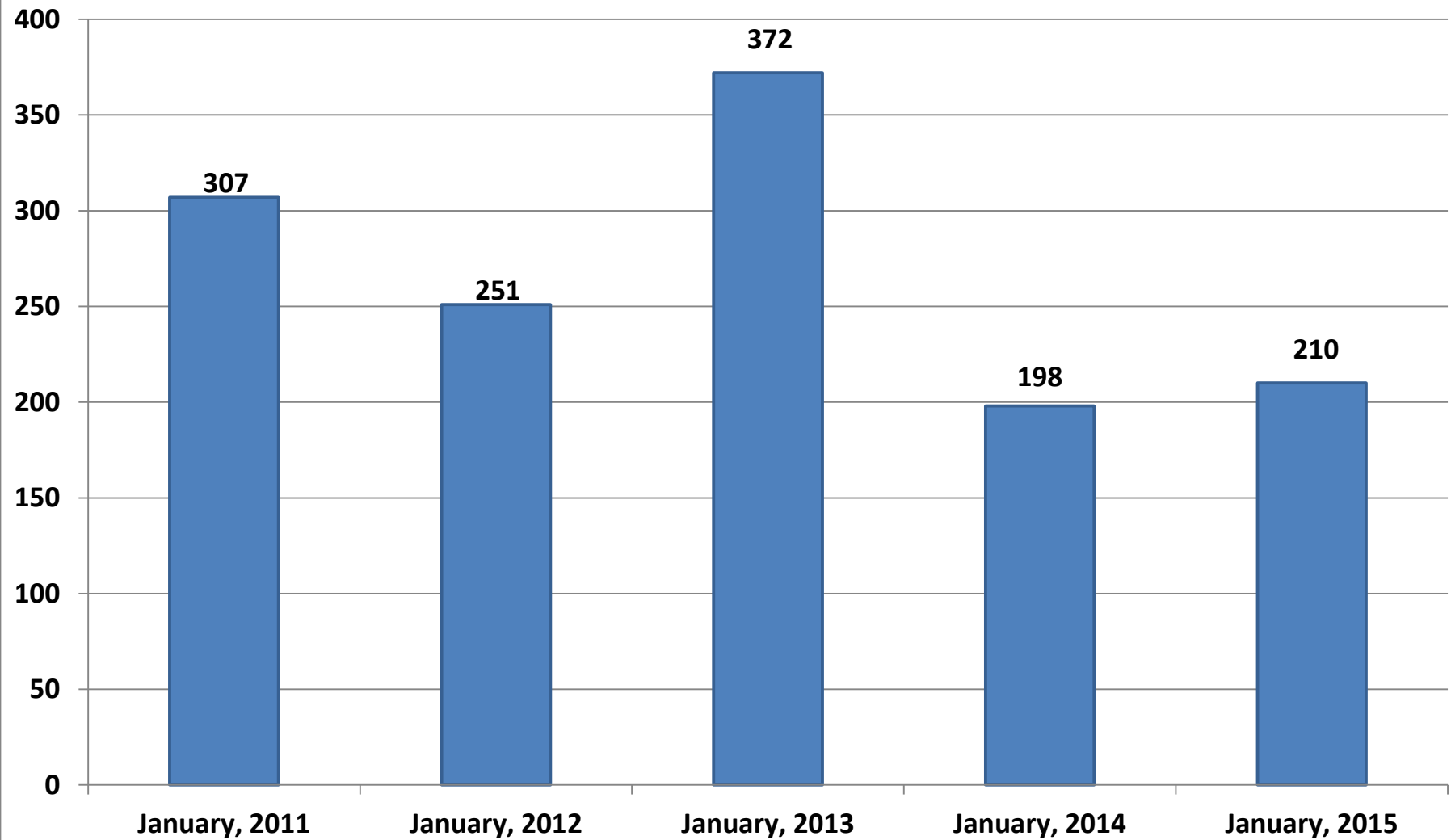
Native Plant Info
Ding Darling
Spiny-tailed Lizard Sighting
Hazardous Waste

Public Walk-Ins

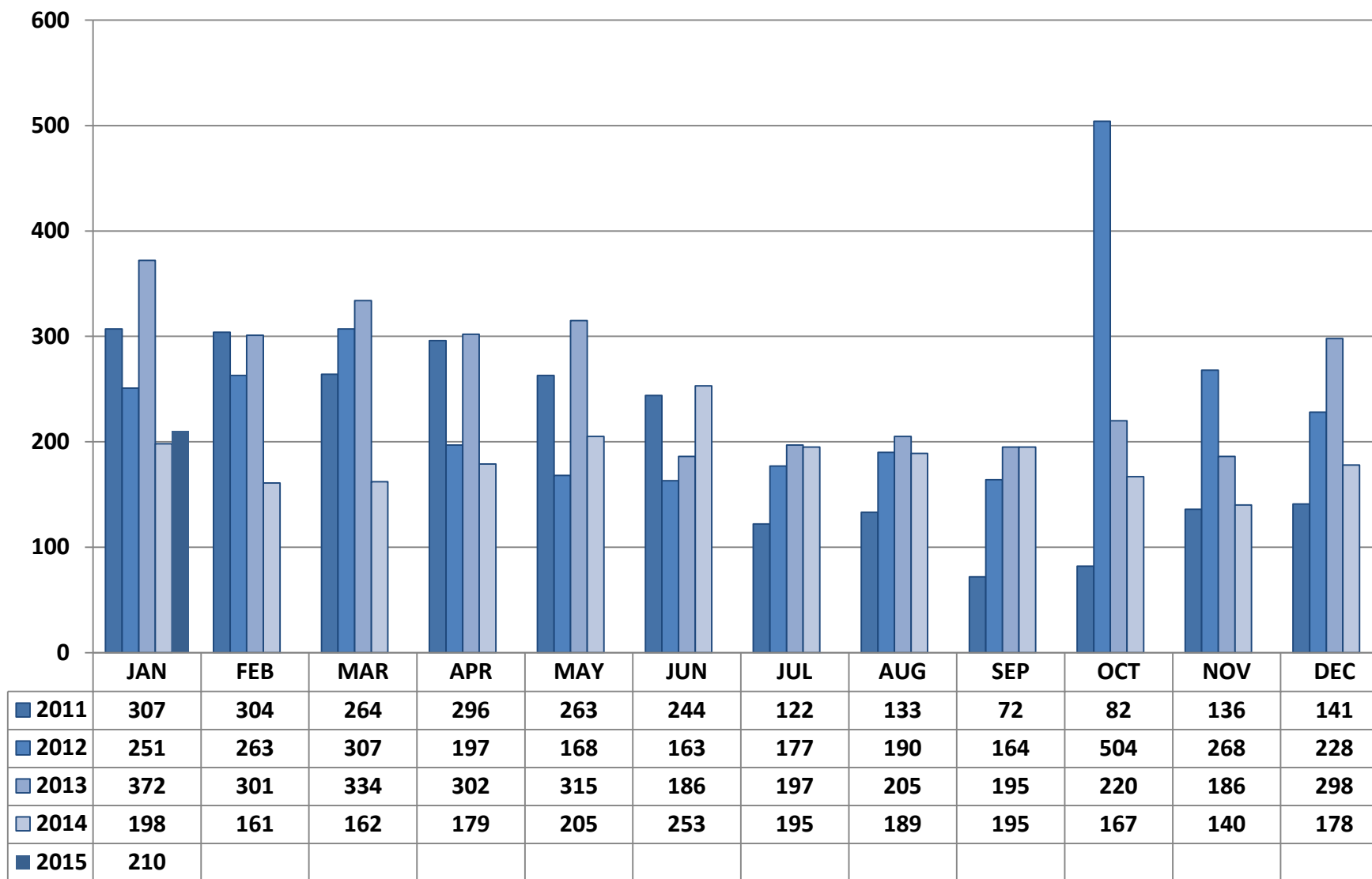
1/26/15 – 1/30/15

To see Jocelyn
Directed to Police
Meeting with City Manager
To pick up Charlotte Harbor Calendar
To see Crystal
Special Event Permit
Directed to Finance
Yard Sale Info
To see Sara
Directed to Rec Center
Directed to Building
Records Request
Directed to Rec Center (Beach Parking)
To see Pamela
Garage Sale
Directed to Public Works (Recycle Bins)

**Legislative Department
Monthly Walk-In Visitor Tracking
January, 2011 - January, 2015
Through January 31, 2015**



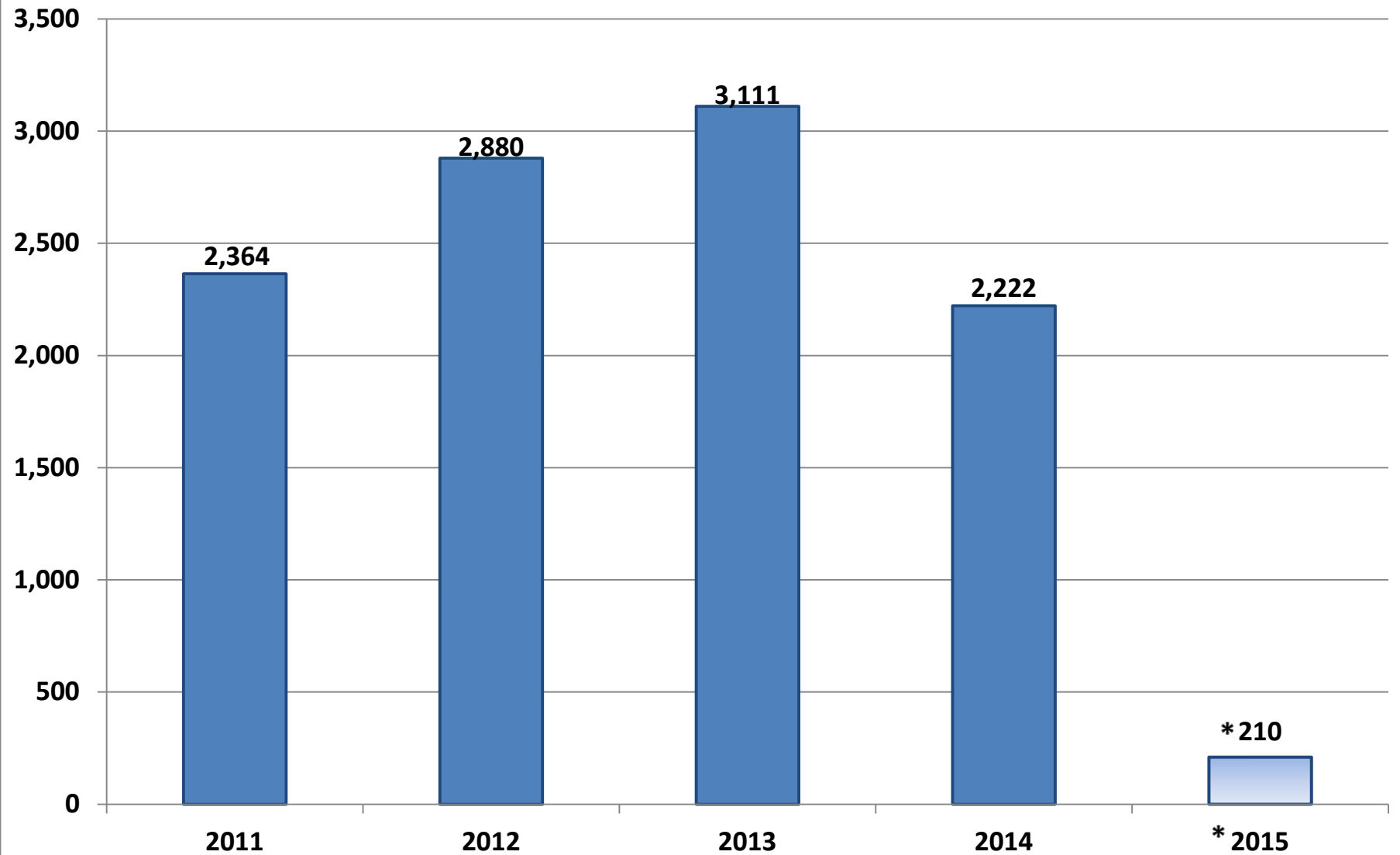
Legislative Department Monthly Walk-In Tracking Through January 31, 2015



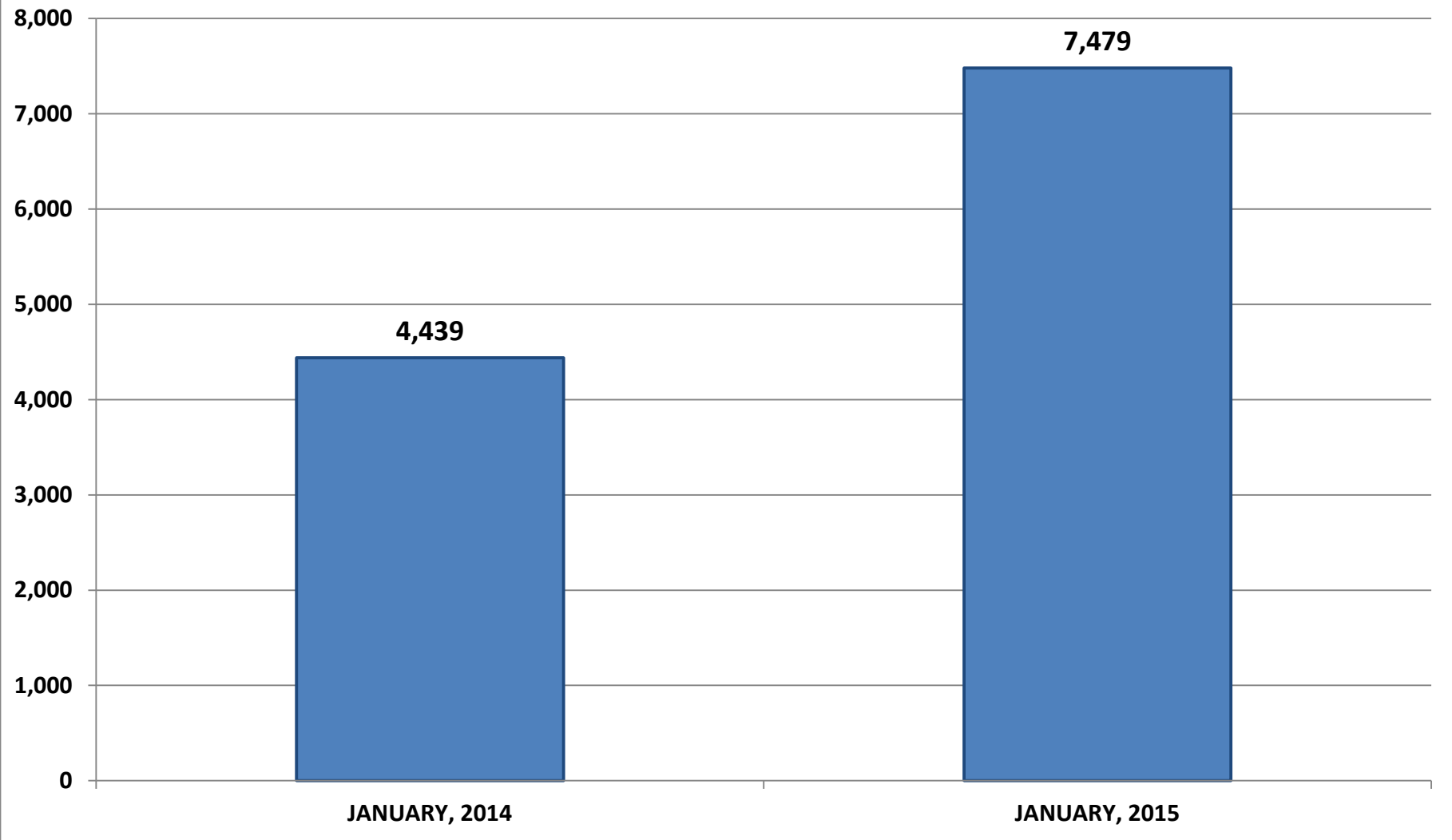
Legislative Department Annual Walk-In Tracking

*Through January 31, 2015

*Partial Year



**Legislative Department
Monthly Email Tracking
(Press Release Responses, Sanibel City Council, and Legislative Staff)
Through January 31, 2015**



Through January 31, 2015

[illegible]

**Legislative Department
Annual Email Tracking
(Press Release Responses, Sanibel City Council, and Legislative Staff)
* Through January 31, 2015**

* Partial Year

