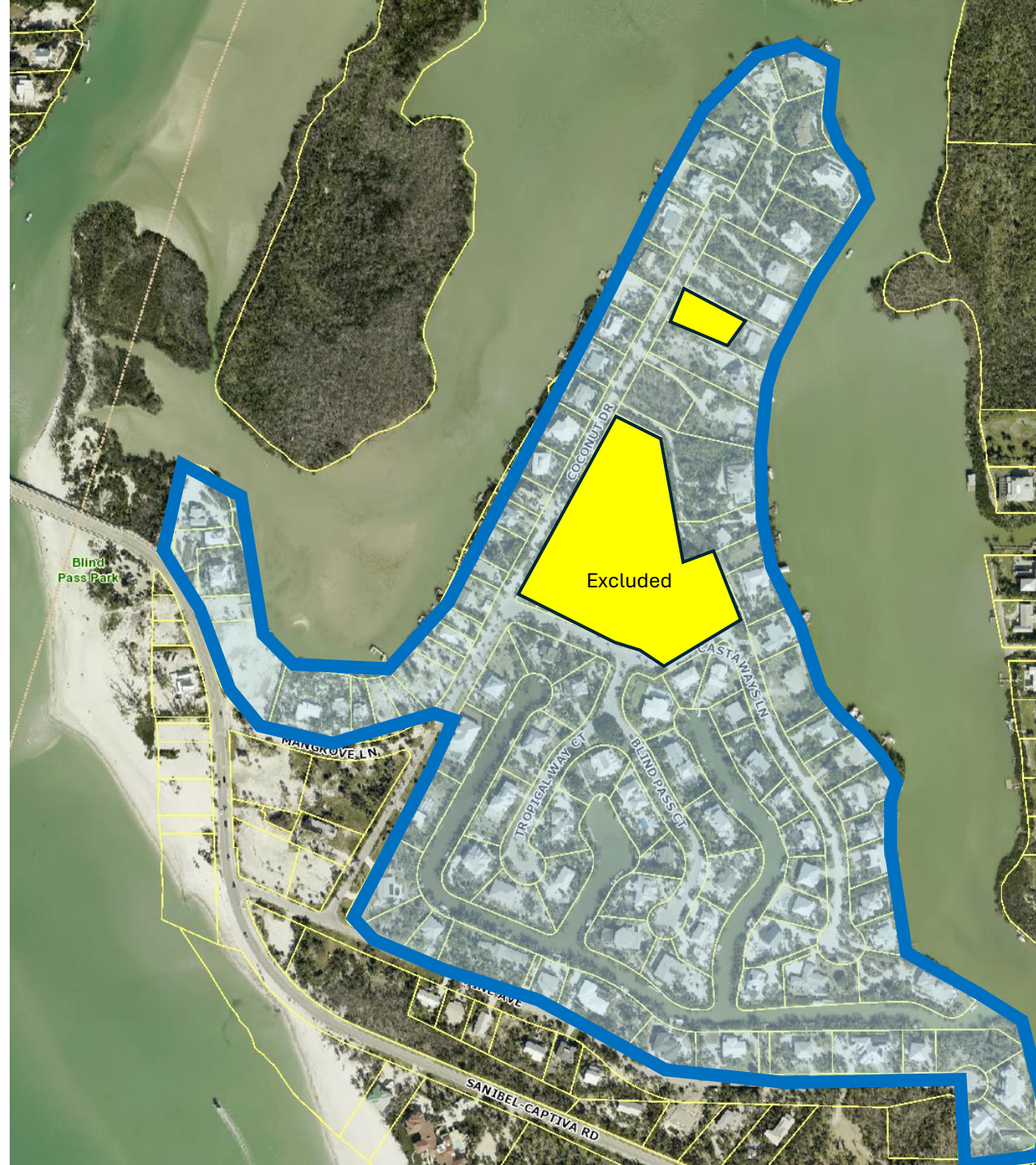
An aerial photograph of a coastal area. A blue line outlines a specific region that includes a large body of water (Wulfert Channel) and surrounding land parcels. Within this blue-outlined area, a smaller, irregularly shaped parcel is highlighted in yellow. The surrounding landscape consists of green fields, some trees, and other water bodies. The text 'Wulfert Channel and Dinkins Bayou Proposed Assessment Area' is overlaid in the bottom left corner.

Wulfert Channel and  
Dinkins Bayou  
Proposed  
Assessment Area



Wulfert Channel and  
Dinkins Bayou  
Assessment Area





Wulfert Channel and  
Dinkins Bayou  
Assessment Area







Wulfert Channel and  
Dinkins Bayou  
Assessment Area

Preserve