



## AGENDA MEMORANDUM

*City Manager*

City Council Regular Meeting Date: May 5, 2026

**To:** City Council  
**From:** Dana A. Souza, City Manager  
**Date:** April 23, 2026

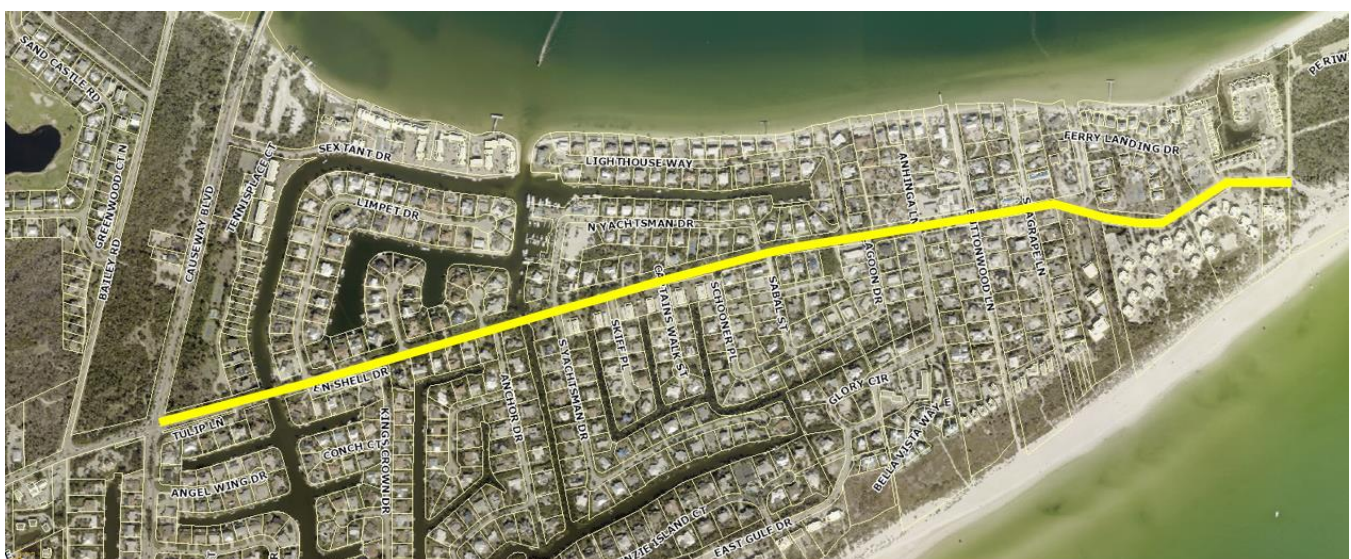
**SUBJECT:** Discussion of draft Ordinance 26-011 to establish public roadway speed limits by Ordinance and reducing speed limits on certain roadways and/or sections of roadways.

**BACKGROUND:** At its April 21, 2026, meeting, the City Council discussed draft Ordinance 26-011 which proposed to authorize the City Council to establish roadway speed limits by Resolution.

Following discussion, the City Council directed staff to amend the draft ordinance to require that any changes to roadway speed limits be authorized by ordinance rather than by resolution. The revised draft, Ordinance 26-011, reflects this direction and establishes speed limits for each publicly owned roadway.

Additionally, the City Council discussed the following speed limit changes:

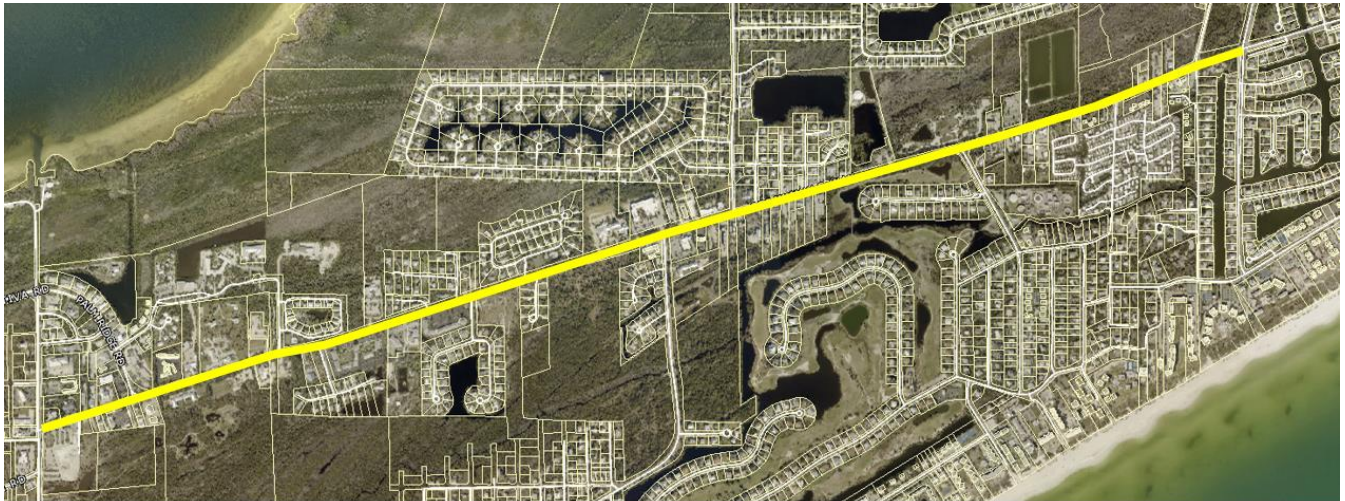
1. E. Periwinkle Way from Causeway Blvd. to Lighthouse Beach Park – reduce the speed limit from 35 mph to 25 mph. **The City Council confirmed their interest in continuing discussion of this proposed speed limit change.**



East Periwinkle Way from Causeway Blvd. to Lighthouse Beach Park – Speed Limit Change From 35 mph to 25 mph

*Sanibel is and shall remain a barrier island sanctuary*

2. Periwinkle Way from Causeway Blvd. to Tarpon Bay Rd. – reduce the speed limit from 35 mph to 30 mph. **The City Council confirmed their interest in continuing discussion of this proposed speed limit change.**



Periwinkle Way between Causeway Blvd. and Tarpon Bay Rd. – Speed Limit Change From 35 mph to 30 mph

3. Sanibel-Captiva Rd. from Rabbit Road to the western limit of the Sanibel School speed zone – consider reducing the speed limit from 35 mph to 30 mph. **The City Council confirmed their interest in continuing discussion of this proposed speed limit change and asked that the start of the speed limit reduction to 30 mph be placed near the Driveway to St. Isabel Catholic Church.**

Sanibel- Captiva Rd. between a point near the church to the westerly edge of the Sanibel School speed zone  
Speed Limit Change From 35 mph to 30 mph



*Sanibel is and shall remain a barrier island sanctuary*

- 
- 
4. Rabbit Road from Sanibel-Captiva Rd. to West Gulf Drive – consider reducing the speed limit from 30 mph to 25 mph. **The City Council determined that no further discussion of this proposed speed limit change is warranted.**

### **What the Current Draft Ordinance Proposes**

The City Council has expressed its intent to establish roadway speed limits by Ordinance. Accordingly, the draft Ordinance is proposed to: (1) confirm speed limit changes previously approved by the City Council, (2) affirm currently posted speed limits, and (3) incorporate additional speed limit amendments discussed by the City Council. Following the Council's discussion and direction, staff will prepare a final draft Ordinance for consideration at the June 16, 2026, City Council meeting.

In summary, the draft Ordinance provided for the City Council discussion includes:

1. Establishes that the City Council may amend public roadway speed limits only by Ordinance.
2. Establishes a maximum speed limit of 35 mph on Sanibel's public roadways.
3. Establishes a speed limit of 35 mph on Sanibel-Captiva Road, except for the section in "Santiva," which remains at 25 mph, and the section near Rabbit Road, which may be amended to a lower speed limit.
4. Establishes a speed limit of 30 mph on Sanibel-Captiva Road from a point near the Catholic Church to the western boundary of the Sanibel school speed zone (proposed amendment).
5. Establishes a speed limit of 30 mph on Periwinkle Way between Causeway Boulevard and Tarpon Bay Road (proposed amendment).
6. Establishes a speed limit of 25 mph on East Periwinkle Way between Causeway Boulevard and Lighthouse Beach Park (proposed amendment).
  - a. The section of E. Periwinkle Way, considered to be a park access road will remain at 20 mph.
7. Establishes the currently posted 25 mph speed limit on Sanibel-Captiva Road in the Santiva area.
8. Establishes the currently posted 20 mph speed limit on the following roadways:
  - a. Albatross Road - Dunes
  - b. Baltusrol Court - Sanctuary
  - c. Sand Castle Road - Dunes
  - d. Troon Court - Sanctuary
  - e. Wulfert Road – Sanctuary

*Sanibel is and shall remain a barrier island sanctuary*

9. Maintains the 10 mph speed limit on the Bay Drive bridge at Buell Creek (current Ordinance).
10. Establishes a speed limit of 30 mph on all other publicly owned roadways (current speed limit).
11. Authorizes the City Manager to set speed limits for sections of publicly owned roadways where conditions may require restrictions, whether temporary or permanent, including areas such as curves, bridges, culverts, park access roads, or other locations where a reduced speed may be warranted.

The presentation included in the agenda packet for this item will be used to guide the City Council discussion. It outlines the current speed limits for the roadways or roadway segments under consideration, followed by the options that have been discussed for potential changes.

**FUNDING SOURCE: N/A**

**RECOMMENDED ACTION:** Discussion and direction.