

**APPENDIX A**  
**Beach Access Locations**



# Beach Access Points

This map depicts the beach access points available for the Sanibel Island Post Hurricane Recovery and Emergency Berm Project.

Speed limits on all roads are 30mph unless otherwise posted.

Legend

Access Areas

Beach Accesses

Truck Route







# Tradewinds Beach Access

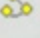
This map depicts the beach access point for Reach 1 for the Sanibel Island Post Hurricane Recovery and Emergency Berm Project.

Speed limits on all roads are 30mph unless otherwise posted.

Legend

 Access Areas

 Beach Accesses

 Truck Route






## Beach Access #4

This map depicts the beach access point for Reach 2 for the Sanibel Island Post Hurricane Recovery and Emergency Berm Project.

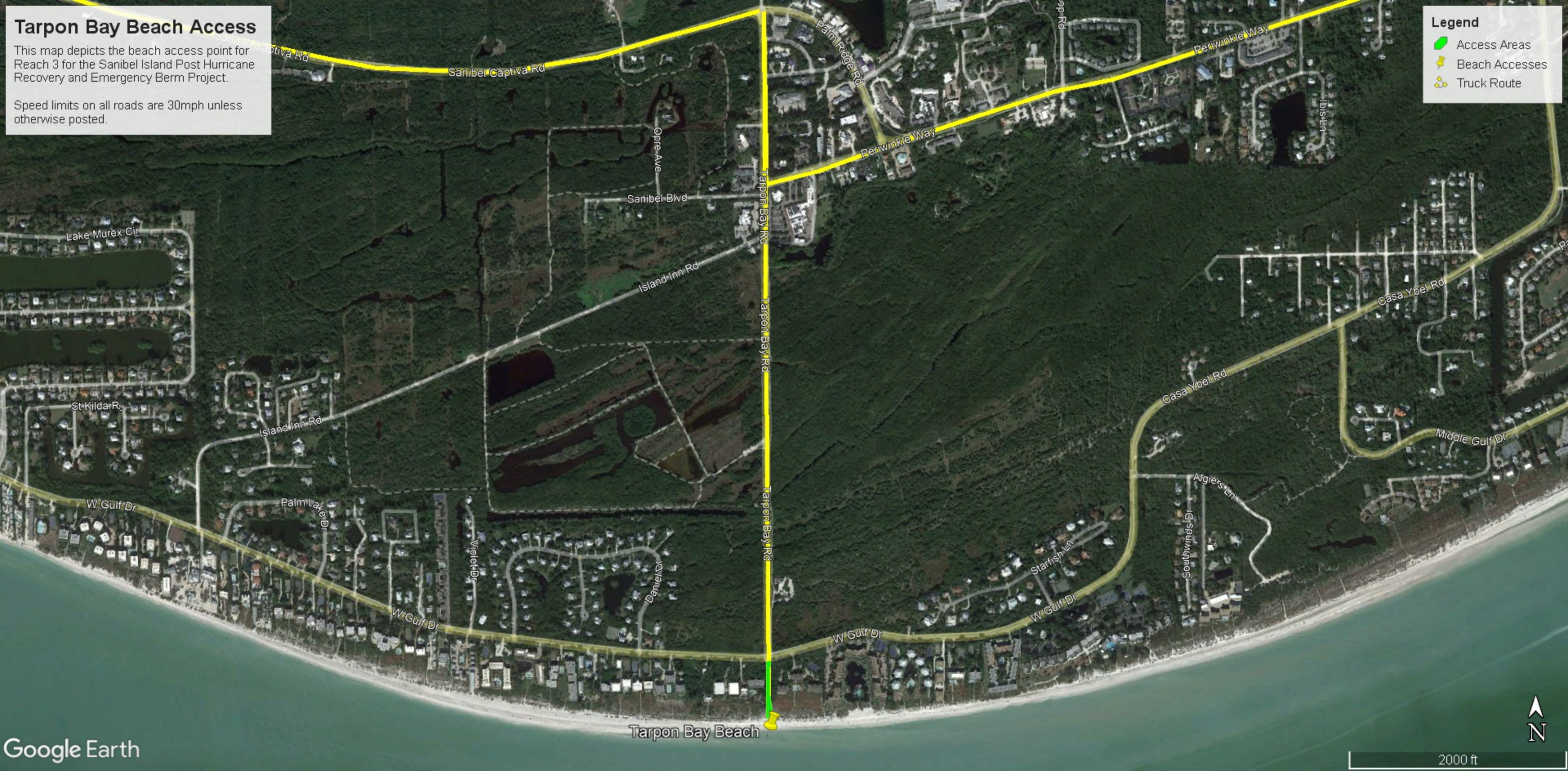
Speed limits on all roads are 30mph unless otherwise posted.

### Legend

-  Access Areas
-  Beach Accesses
-  Truck Route










**Tarpon Bay Beach Access**

This map depicts the beach access point for Reach 3 for the Sanibel Island Post Hurricane Recovery and Emergency Berm Project.

Speed limits on all roads are 30mph unless otherwise posted.

**Legend**

-  Access Areas
-  Beach Accesses
-  Truck Route



# Donax Street Access

This map depicts the beach access point for Reach 4 for the Sanibel Island Post Hurricane Recovery and Emergency Berm Project.

Speed limits on all roads are 30mph unless otherwise posted.

Legend

- Access Areas
- Beach Accesses
- Truck Route

