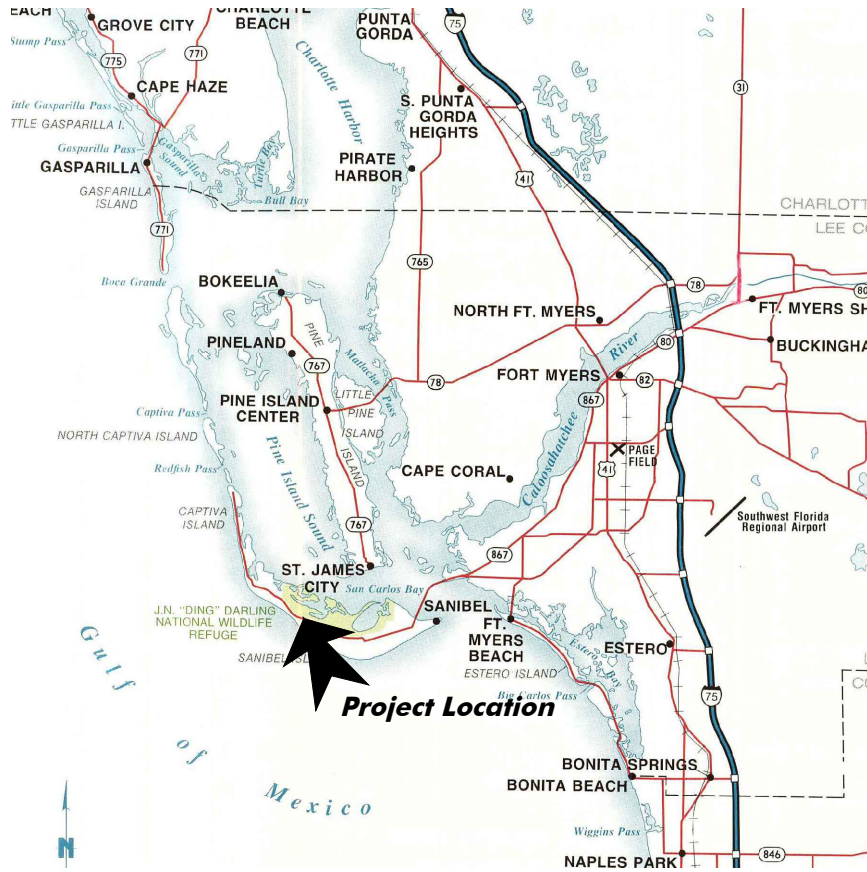
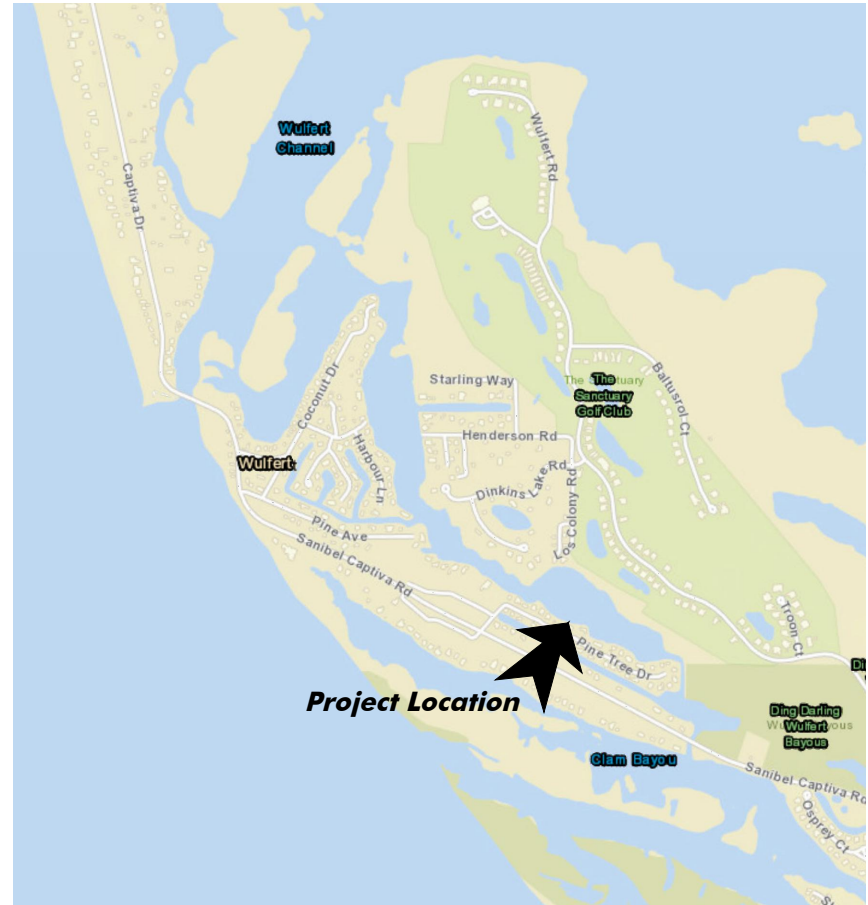


SECTION: 12
 TOWNSHIP: 46 S
 RANGE: 21 E



Vicinity Map

SCALE: 1" = 10 mi.



Location Map

SCALE: 1" = 2,500'

March 19, 2026 11:01:42 a.m.
 Drawing: SANMASTERHW.DWG



1938 Hill Avenue, Fort Myers, Florida 33901
 Office: 239-334-6870 Fax: 239-334-7810
 MARINE and ENVIRONMENTAL CONSULTANTS

3-19-26

CLM

City of Sanibel

SHEET
1/3

SECTION: 12
 TOWNSHIP: 46 S
 RANGE: 21 E

Lee County Aerial 2024



Legend	
	Area 1, 1A
	Area 2, 2A
	Area 3 Private
	Area 3 City
	Area 4 Private
	Area 4 City

Dredge Volume Calculation Areas

SCALE: 1" = 600'

Note: Property lines reference Lee County Property Appraiser.
 Bathymetric survey conducted by HWA, Inc. on 12-11-24.
 Depths reference MLW per Tide Station 872-5383. MLW @
 -1.44' NAVD and MHW @ 0.25' NAVD.

March 19, 2026 11:01:42 a.m.
 Drawing: SAN8MASTERHW.DWG



1938 Hill Avenue, Fort Myers, Florida 33901
 Office: 239-334-6870 Fax: 239-334-7810
 MARINE and ENVIRONMENTAL CONSULTANTS

3-19-26

CLM

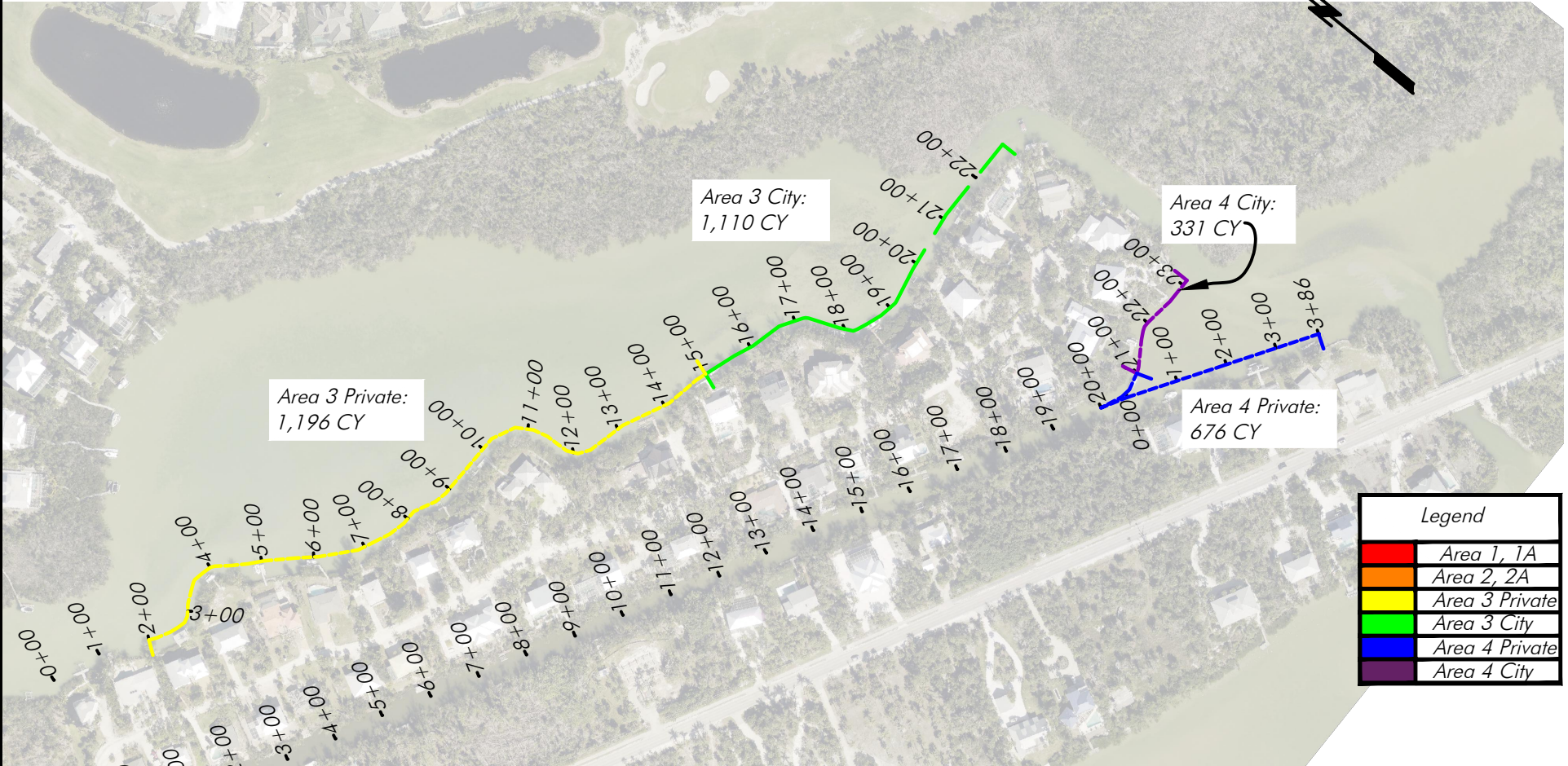
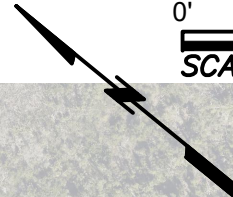
City of Sanibel

SHEET
2/3

SECTION: 12
 TOWNSHIP: 46 S
 RANGE: 21 E

Lee County Aerial 2024

0' 150' 300'
 SCALE FEET



Area 3 Private:
1,196 CY

Area 3 City:
1,110 CY

Area 4 City:
331 CY

Area 4 Private:
676 CY

Legend	
	Area 1, 1A
	Area 2, 2A
	Area 3 Private
	Area 3 City
	Area 4 Private
	Area 4 City

Dredge Volume Calculation Detail A

SCALE: 1" = 300'

Note: Property lines reference Lee County Property Appraiser.
 Bathymetric survey conducted by HWA, Inc. on 12-11-24.
 Depths reference MLW per Tide Station 872-5383. MLW @
 -1.44' NAVD and MHW @ 0.25' NAVD.

March 19, 2026 11:01:42 a.m.
 Drawing: SAN6MASTERHW.DWG



1938 Hill Avenue, Fort Myers, Florida 33901
 Office: 239-334-6870 Fax: 239-334-7810
 MARINE and ENVIRONMENTAL CONSULTANTS

3-19-26

CLM

City of Sanibel

SHEET
3/3