

Welcome to the Birmingham Family Trail



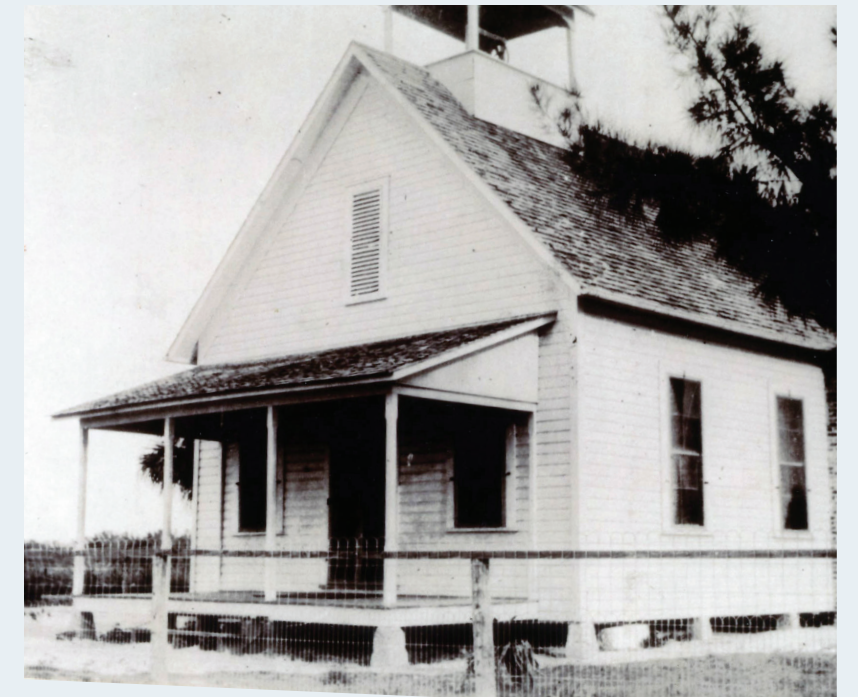
What is the history of the Puschel Preserve?

The Sanibel School for White Children operated here from 1903 through 1964, when an integrated school opened on Sanibel-Captiva Road.

Until 2003, the schoolhouse building was used as a theater — first as the Pirate Playhouse and later as the Old Schoolhouse Theater. In 2004, the building was moved to the Sanibel Historical Village and restored to its 1920s appearance.

Thanks to donations from 150 families, Sanibel-Captiva Conservation Foundation (SCCF) purchased the property in 2021 to prevent the development of 13 or more homes and to complete a crucial wildlife corridor.

After Hurricane Ian in 2022, SCCF allowed the property to be used as a debris sorting site for eight months to expedite the community's recovery. Restoration and replanting of the property began shortly after the debris was removed.



Who is SCCF?



Founded in 1967, SCCF's mission is to protect and care for Southwest Florida's coastal ecosystems through our focus on Conservation and Ecosystem Restoration, Water Quality Research, Policy and Advocacy, Sea Turtles and Shorebirds, Native Landscaping, Habitat and Wildlife Management, and Environmental Education.

Thanks to the efforts of many who came before us, we are the largest private landowner on Sanibel Island, managing more than 1,800 acres on Sanibel plus more than 300 additional acres on surrounding islands, South Fort Myers, and Cape Coral.



Trail made possible by the generosity of Jim and Liz Birmingham