

City of Sanibel
School Speed Zone Photo Enforcement
Informational Packet



Governing Laws

Florida HB 657 — Enforcement of School Zone Speed Limits was passed in July of 2023.

The bill authorized a county or municipality to place or install, or contract with a vendor to place or install, an automated speed detection system on a street or highway under its jurisdiction or a state road if permitted by the Florida Department of Transportation (FDOT). The system may only be used to enforce speed limits in school zones within 30 minutes before a regularly scheduled breakfast program or school session, during the entirety of a regularly scheduled school session, and within 30 minutes after the end of a regularly scheduled school session. The bill:

- Defines the term “speed detection system” and requires a county or municipality to enact an ordinance authorizing the placement or installation of speed detection systems and to make a determination that the location of such system warrants additional enforcement.
- Requires signage warning motorists that speed detection systems are in use.
- Requires a 30-day public awareness campaign prior to commencing enforcement of school zone speed limits with speed detection systems.
- Requires the governing body of a county or municipality operating such system to hold public meetings regarding system provider contracts and data reported to the Department of Highway Safety and Motor Vehicles (DHSMV).
- Requires speed detection systems to be installed according to FDOT specifications.
- Provides requirements for issuing a notice of violation or a uniform traffic citation.
- Establishes a \$100 penalty for each violation and provides for the distribution of the proceeds to state and local government.
- Provides defenses for persons who receive a notice of violation or uniform traffic citation and procedures for hearings regarding violations.
- Provides requirements for the retention and destruction of data obtained from speed detection systems.
- Requires annual reporting by counties and municipalities that implement speed detection system programs in school zones and requires an annual summary report by DHSMV.
- Exempts speed detection systems from DHSMV’s requirements for radar or lidar units, while requiring a speed detection system to perform self-tests as to its detection accuracy.
- Prohibits points being imposed for a violation if unlawful speed in a school zone enforced by a speed detection system and prohibits such violations from being used for purposes of setting motor vehicle insurance rates.

Florida State Statue 316.1896 covers:

Roadways maintained as school zones; speed detection system enforcement; penalties; appeal procedure; privacy; reports.

Sanibel Code of Ordinances Chapter 66 - Traffic, Article III – Speed Limits, Division 2 – School Speed Zones was enacted to authorize the City of Sanibel to establish a School Speed Zone Enforcement Program.

School Speed Zone Times

The speed zone cameras are active during all regularly scheduled school days from 6:30 am - 2:30 pm.

From 6:30 am - 7:45 am the flashing school zone lights will be on for student drop off and the speed limit is 20 mph.

From 7:46 am - 1:44 pm during the school day, the normal speed limit is 35 mph.

From 1:45 pm - 2:30 pm the flashing school zone lights will be on for student pick up and the speed limit is 20 mph.

On early dismissal days lights will flash from 6:30am to 7:45am and again from 11:45am to 12:30pm.

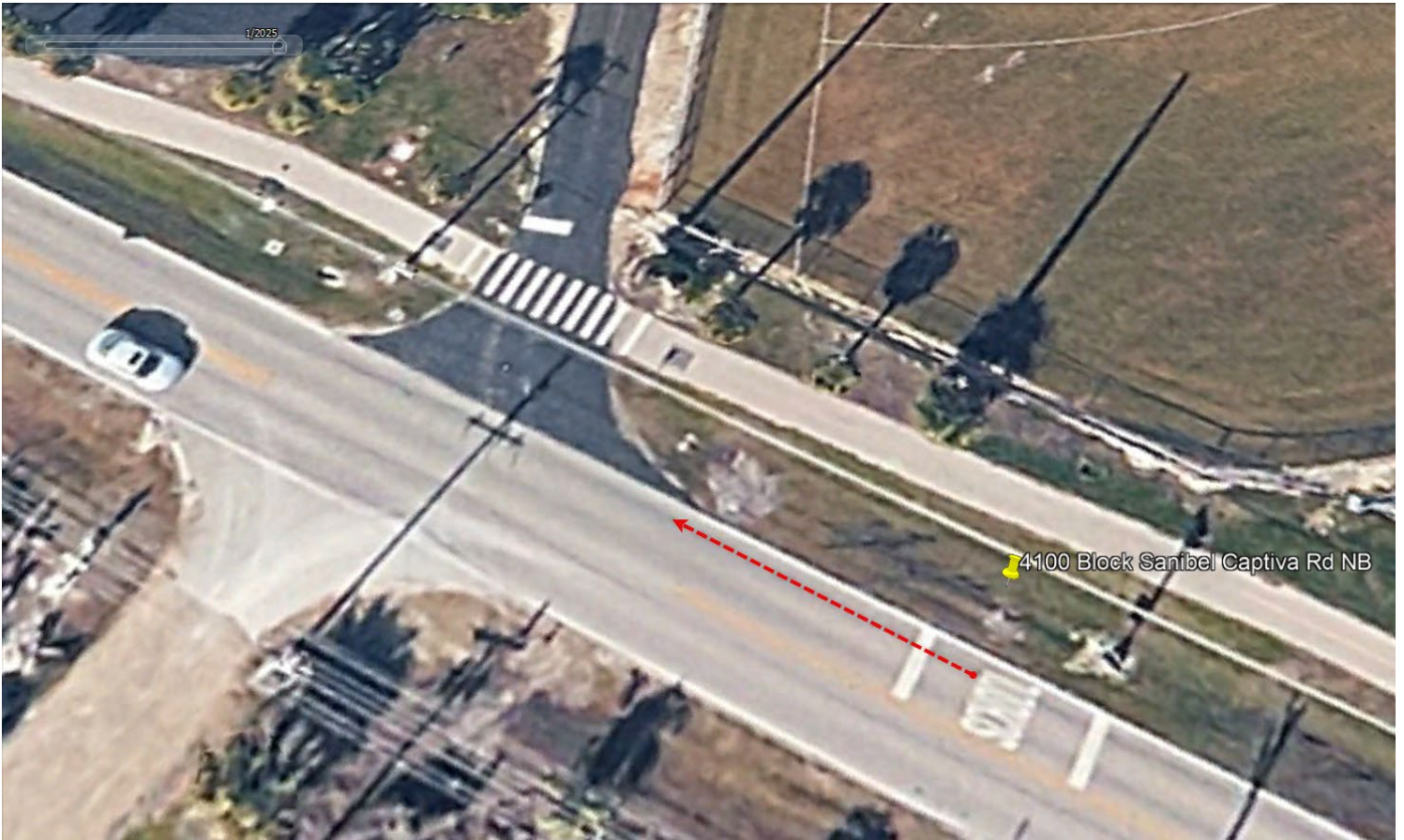
Speed zone cameras are not active outside school hours including evenings, weekends, holidays, and summer break.

School Speed Zone Camera Locations

- One camera is located at the 4100 Block of Sanibel Captiva Rd capturing Northbound Traffic
- One camera is located at the 3800 Block of Sanibel Captiva Rd capturing Southbound Traffic



School Speed Zone Camera Locations



School Speed Zone Signage



Sign notifying traffic of Photo Enforcement for Northbound Traffic
at 4100 Block Sanibel Captiva Road

School Speed Zone Signage



Light, Sign, and Electronic sign for Northbound Traffic
at 4100 Block Sanibel Captiva Road

School Speed Zone Signage



Radar unit and camera capturing Northbound Traffic
at 4100 Block Sanibel Captiva Road

School Speed Zone Signage



Sign notifying traffic of Photo Enforcement for Southbound Traffic
at 3800 Block Sanibel Captiva Road

School Speed Zone Signage



Light, Sign, and Electronic sign for Southbound Traffic
at 3800 Block Sanibel Captiva Road

School Speed Zone Signage



Radar unit and camera capturing Southbound Traffic
at 3800 Block Sanibel Captiva Road