

CURRENT RAINFALL AND CLIMATE OUTLOOK

For April 2026 to date, rainfall within the SFWMD is above normal at 3.00" (128%), with the highest rainfall totals occurring early in the month and followed by much drier conditions over the last two weeks. The west EAA, WCA3, and Everglades National Park have received below normal rainfall (76-85%)

<https://www.sfwmd.gov/weather-radar/rainboard>

For the 2025/2026 dry season to date (October 11, 2025-April 26, 2026), the SFWMD has received 10.13" of rain (63% of normal). Rainfall varied some across the District, with the western EAA and Water Conservation Area 3 being the driest (48-50% of normal), and the east coast counties (Palm Beach, Broward, Miami-Dade, and the Florida Keys) being the wettest (71-80% of normal).

<https://www.sfwmd.gov/weather-radar/rainboard>

The NOAA Climate Prediction Center one-month Probability Outlook for May 2026 indicates equal chances of above normal, below normal, and normal rainfall for Florida.

https://www.cpc.ncep.noaa.gov/products/predictions/long_range/lead14/

The three-month outlook for May-Jun-Jul 2026 indicates a 40-50% chance of above normal rainfall for most of peninsular FL, with a 33-40% chance of above normal rainfall for the panhandle and extreme southern Florida.

https://www.cpc.ncep.noaa.gov/products/predictions/long_range/lead01/off01_prpc.gif

NOAA ENSO Report (updated on 4/27/2026):

- **ENSO-neutral conditions are present.**
- Equatorial sea surface temperatures (SSTs) are near-to-above-average in the east-central Pacific Ocean.
- ENSO-neutral conditions favored through April-June 2026 (80% chance). In May-July 2026, **El Niño** is likely to emerge (61% chance) and persist through at least the end of 2026.
- https://www.cpc.ncep.noaa.gov/products/analysis_monitoring/lanina/enso_evolution-status-fcsts-web.pdf

ALGAE BLOOMS

Red Tide: FWC Update for April 24, 2026

<https://myfwc.com/research/redtide/statewide/>

Over the past week, the red tide organism, *Karenia brevis*, was observed at background concentrations in one sample from Northwest Florida and two offshore samples from Southwest Florida (Pinellas & Hillsborough counties).

Fish kills & respiratory irritation suspected of being related to red tide were not reported.

Sanibel is and shall remain a barrier island sanctuary



Blue-Green Algae: ProtectingFloridaTogether.gov

No blue green algae cautions or alerts are in effect for the region.

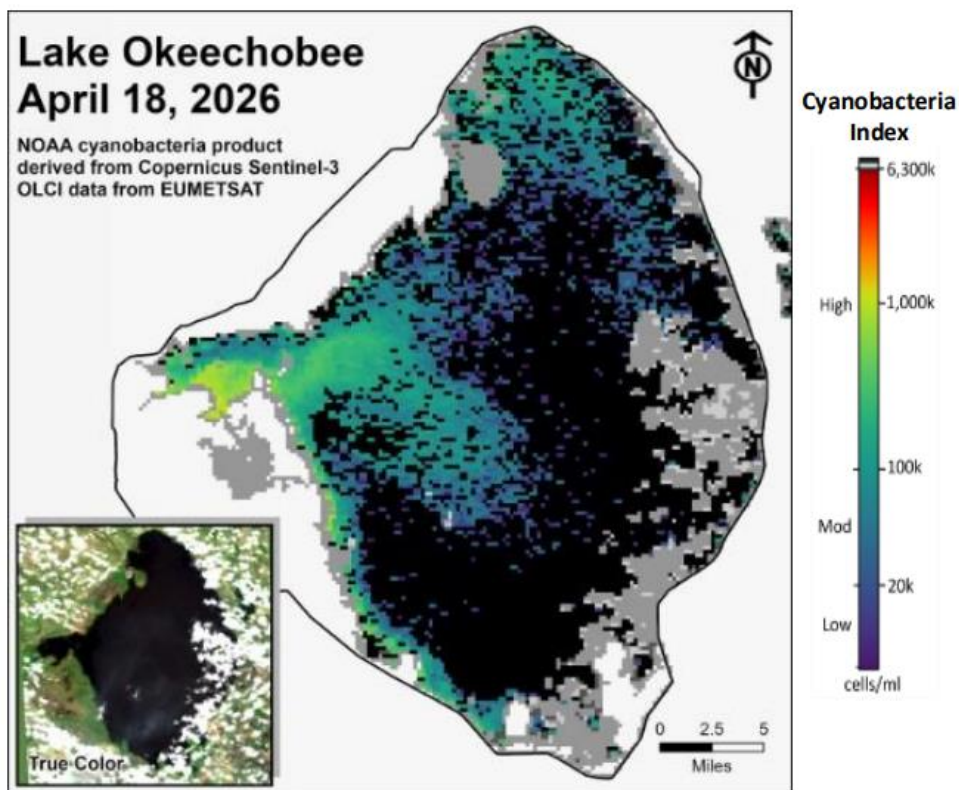
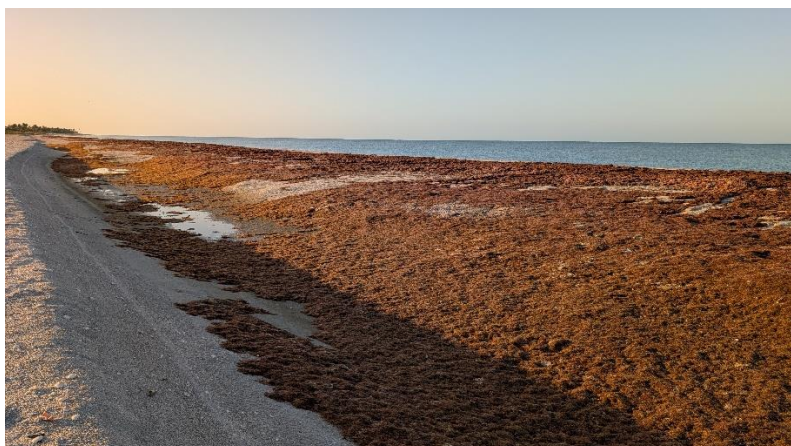


Figure LO-6. Cyanobacteria bloom index level on Lake Okeechobee, based on NOAA’s harmful algal bloom monitoring system. Gray color indicates cloud cover. *Provisional NOAA image, subject to change*.

Red Drift Algae: Locally heavy red drift algae deposits continue to appear on Sanibel beaches.



Tradewinds vicinity-4/21/2026

Trichodesmium: No reports

Sargassum: No reports

Sanibel is and shall remain a barrier island sanctuary

PAST MEETING HIGHLIGHTS & UPDATES

Blue-Green Algae Task Force

Advances in Science-Based Decision Making

April 8, 2026

West Palm Beach, FL

<https://www.protectingfloridatogether.gov/state-action/blue-green-algae-task-force>

- First Task Force meeting since June 2024
- The purpose of the meeting was to provide an update on the progress that has been made on the Task Force's recommendations. During his opening remarks, Dr. Mark Rains stated DEP's top priority is to reduce nutrient loading. A series of presentations were provided followed by discussion by the Task Force and Public Comment.
- Presentations:
 - Florida State University - [A Modeling Approach to Evaluate Horizontal and Vertical Distances for Nitrogen Attenuation from OSTDS](#)
 - University of South Florida - [What Are the Chances? A Geospatial Tool for Predicting Nutrient Loading to Florida's Waterbodies](#)
 - RTI International - [Operational Forecasting of Harmful Algal Blooms in Florida Lakes Using a Two-Stage Bayesian Model](#)
 - DEP Office of Water Policy and Ecosystems Restoration - [Innovative Technologies Completed Projects Summary](#)
 - Florida Institute of Technology - [Hypoxia and Internal Nutrient Loading](#)
 - University of South Florida - [Diving Deeper Into Our Knowledge of Florida's Underwater Caves](#)
 - DEP Office of Environmental and Transparency (OEAT) - [DEP's Data and Analytics Journey](#)
- Task Force Discussion:
 - In general, the Task Force was very pleased with the progress that has been made
 - Noted a lot of projects to address external nutrient loading, but need more work and focus on internal (legacy) nutrients; more needs to be done in this vein
 - Indicated DEP is doing a good job identifying where the issues are, but now need to start thinking about how to address them.

CHNEP Technical Advisory Committee

April 9, 2026

Port Charlotte, FL

<https://www.chnep.org/technical-advisory-committee>

- Nutrients & Red Tide State of the Science Symposium Highlights — Betty Staugler, NOAA HAB Liaison Florida Sea Grant
 - Red Tide White Paper: <https://www.flseagrant.org/wp-content/uploads/2026/02/State-of-the-Science-for-Nutrients-and-Red-Tide-in-Florida-2-26-25.pdf>

Sanibel is and shall remain a barrier island sanctuary

SFWMD Progress Update on the Northern Everglades and Estuaries Protection Program (NEEPP)

April 16, 2026

West Palm Beach, FL

<https://sfwmd.gov/event/progress-update-northern-everglades-and-estuaries-protection-program>

The SFWMD hosted a stakeholder workshop that featured progress update reports from SFWMD, FDEP, and FDACs on their involvement and efforts related to the Northern Everglades and Estuaries Protection Program (NEEPP). Some topics of interest:

- FDEP now requires golf Courses within Basin Management Action Plan areas (BMAPs) to obtain FL Golf Course BMP Program certification, develop and submit a Nutrient Management Plan, implement BMPs as described by the UF IFAS golf course BMP manual, and perform water quality monitoring (if required). However, since Sanibel is not within the Caloosahatchee BMAP, this is not required for golf courses on Sanibel.
- Within the Caloosahatchee watershed, SFWMD reported that:
 - the C-43 Reservoir reached substantial completion in March 2026 and alum testing (for the removal of nitrogen and phosphorus) will begin in May 2026.
 - the BOMA flow equalization basin construction is to begin later this year.
 - land was purchased just north of Lake Okeechobee (near S154 structure) to create a stormwater treatment area (STA) to remove nutrients before they enter the lake.

UPCOMING MEETINGS & EVENTS

CHNEP Management Committee

May 8, 2026

9:00 AM

Port Charlotte, FL

<https://www.chnep.org/management-committee>

Florida Fish and Wildlife Conservation Commission Meeting

May 13-14, 2026

Time TBD

Fort Myers, FL

<https://myfwc.com/about/commission/commission-meetings/>

SFWMD Governing Board Meeting

May 14, 2026

9:00 AM

West Palm Beach, FL

<https://www.sfwmd.gov/news-events/meetings>

FUNDING SOURCE: N/A

RECOMMENDED ACTION: N/A

Sanibel is and shall remain a barrier island sanctuary