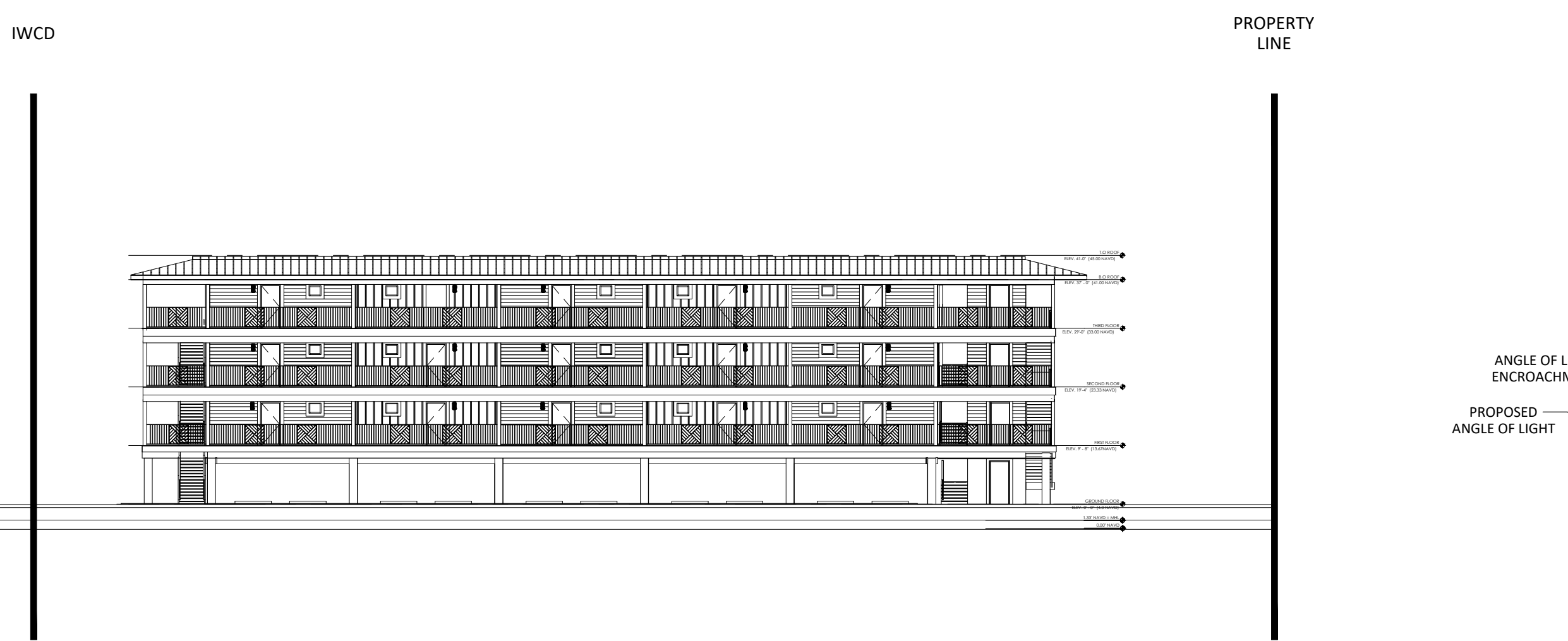
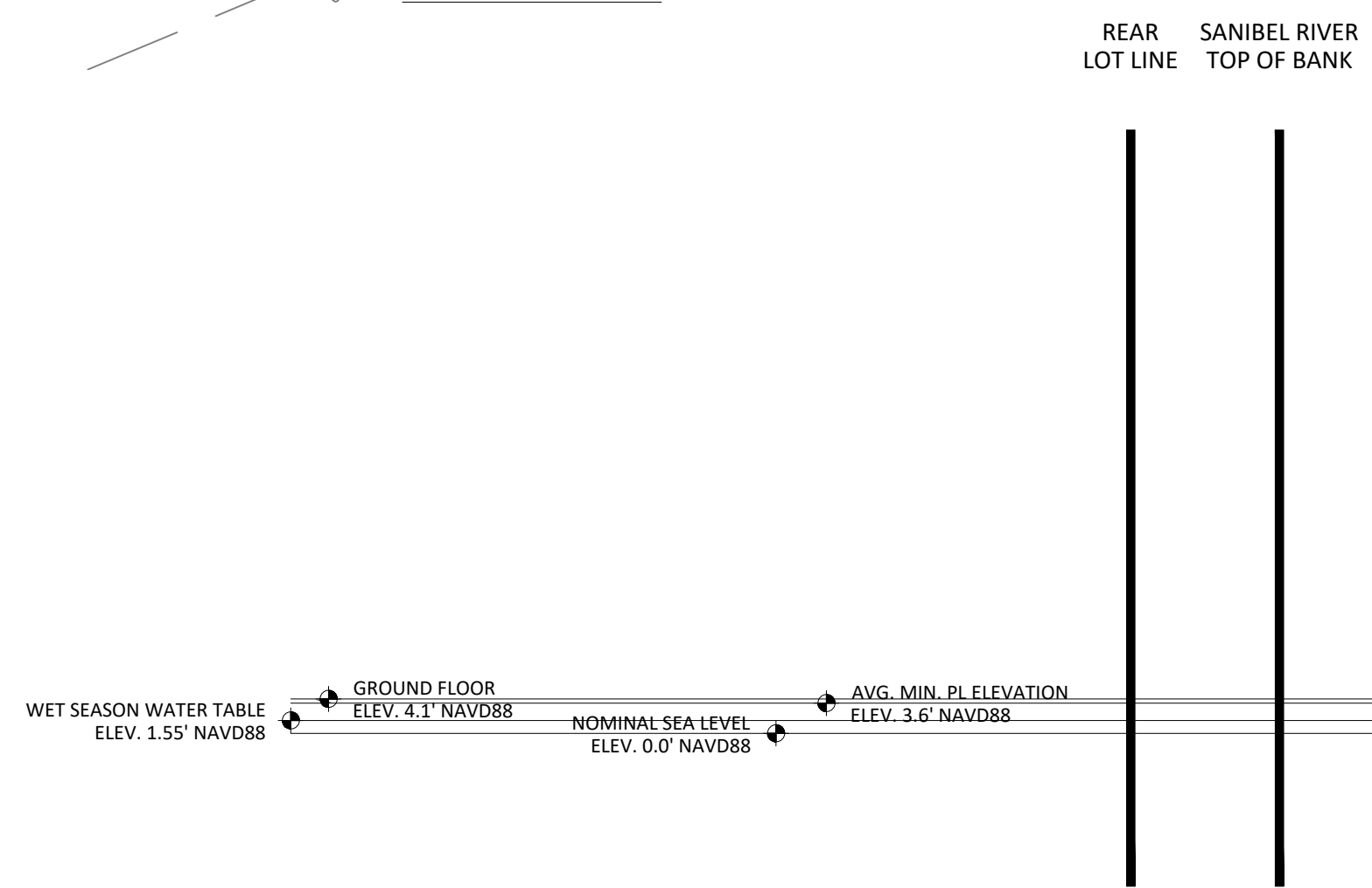
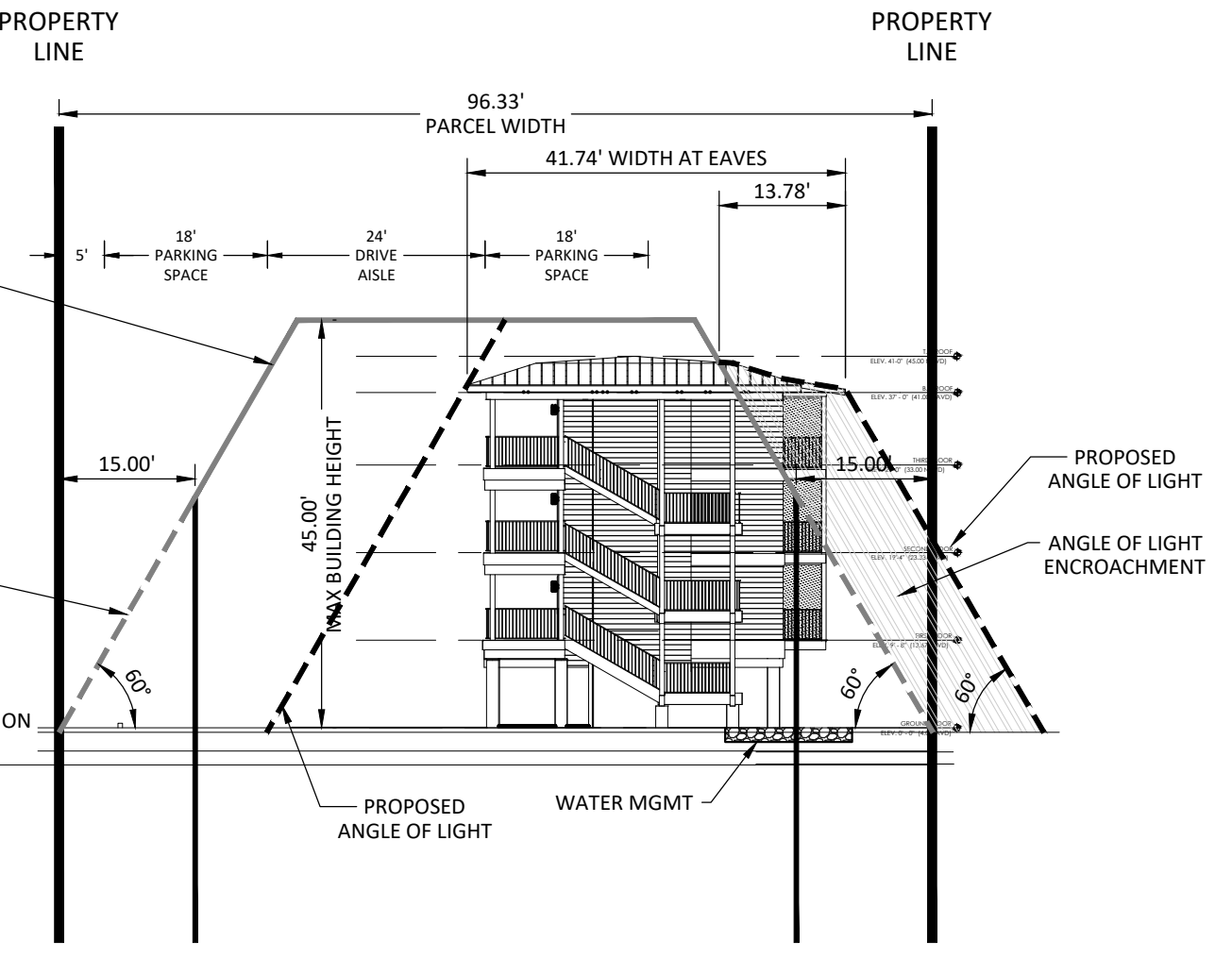
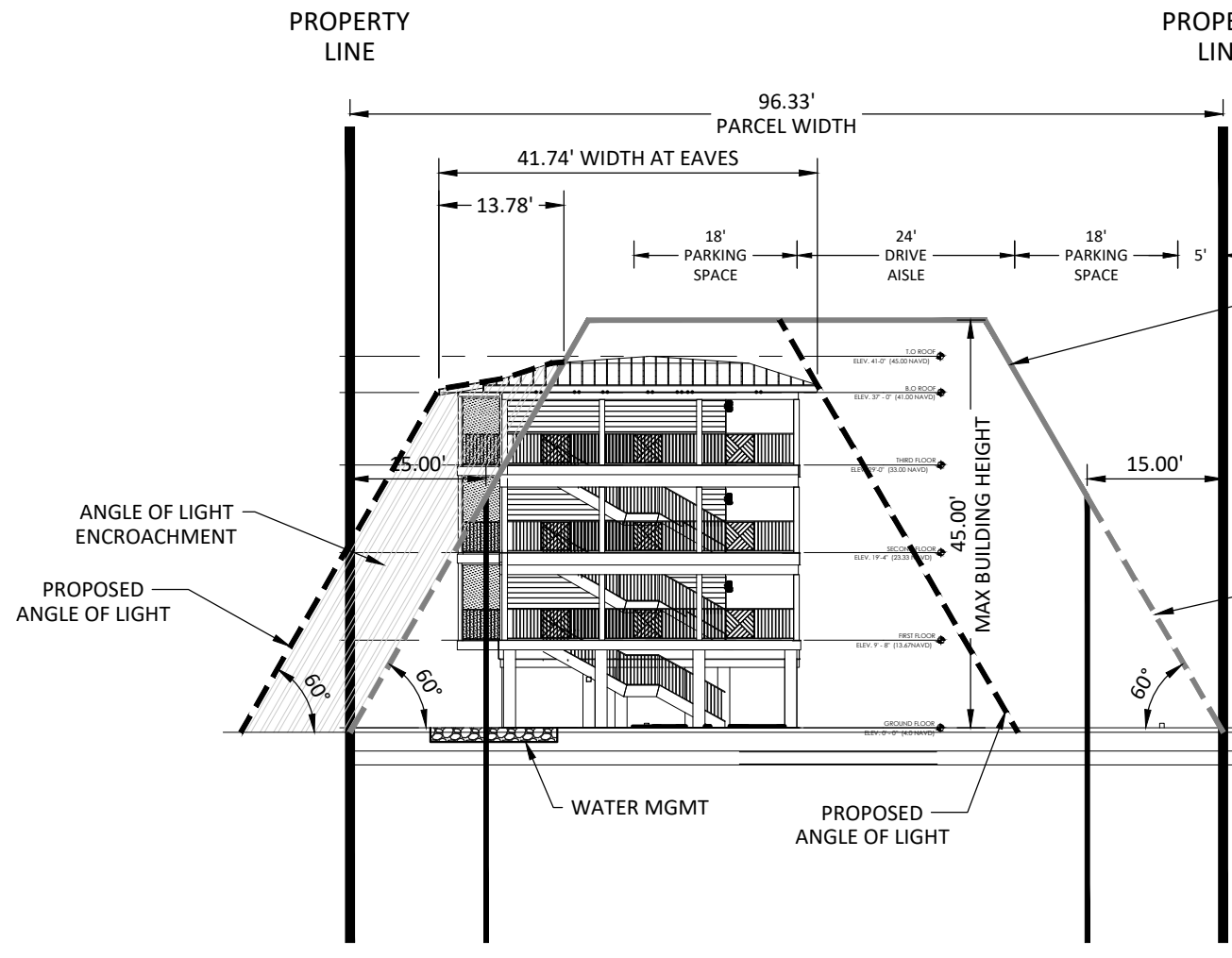
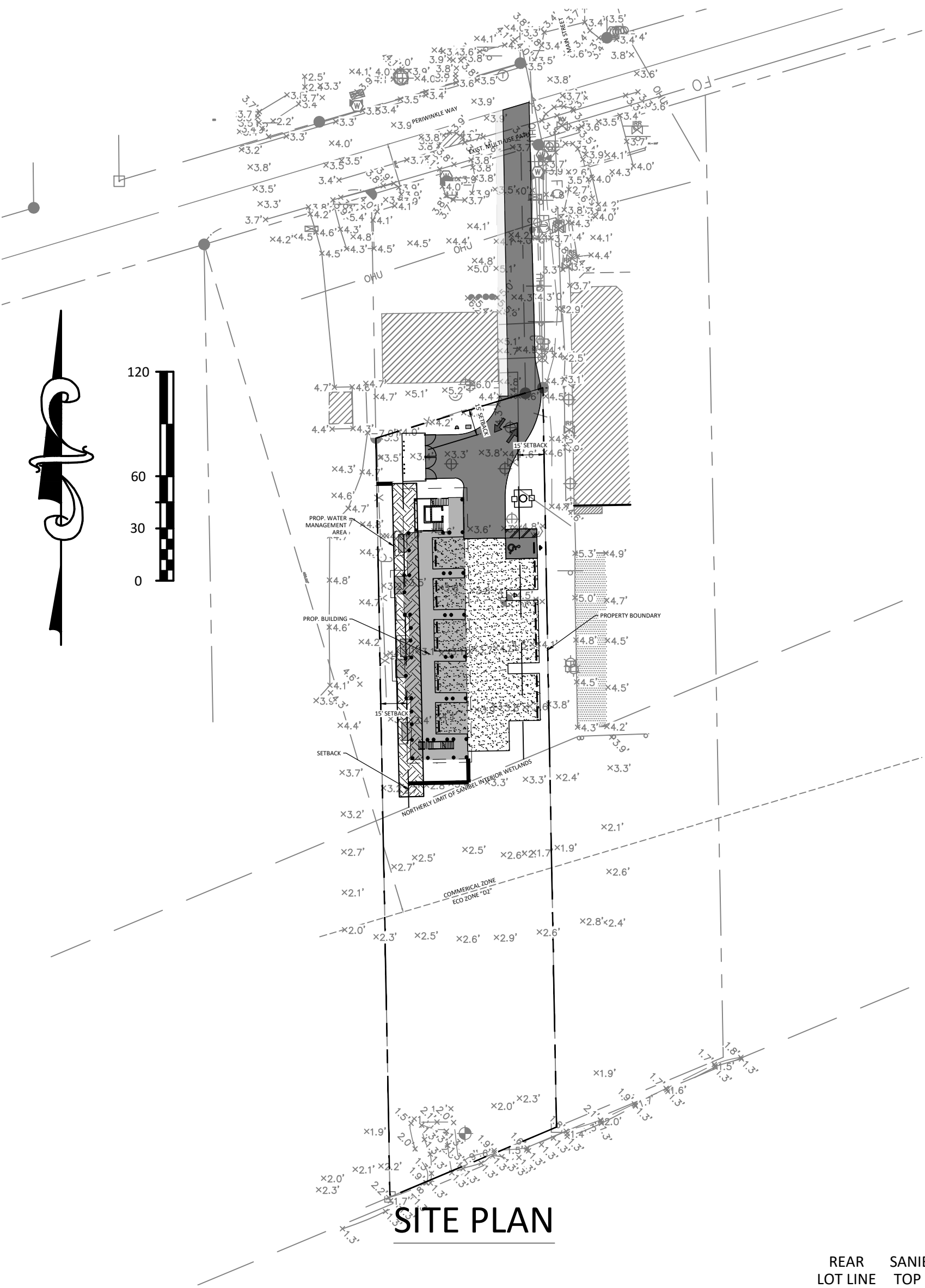


P:\Projects\24_301.2401281.000_Riverview_Chr_at_1517_Periwinkle_Way\FL_GA_Fort Myers\06-CAD\Exhibits\Angle of Light_REV01.dwg Plotted: Mar 04, 2025 11:41am by sfilhaber



			DESIGNED BY	SCF	OWNER / DEVELOPER: COMMUNITY HOUSING AND RESOURCES, INC. 2340 PERIWINKLE WAY, SUITE K-2 SANIBEL, FL 33957	 ENGINEERS • SURVEYORS • PLANNERS • SCIENTISTS	CONSTRUCTION PLANS FOR		ANGLE OF LIGHT EXHIBIT		PROJECT NO.: 301.2401281.000
			DRAWN BY	DZ			RIVERVIEW CHR AT 1517 PERIWINKLE WAY				DATE: JANUARY 2025
			CHECKED BY	SF			LEE COUNTY, FLORIDA				SCALE: 1" = 20'
	PER CITY OF SANIBEL COMMENTS DATED 02/13/25	02/14/25	APPROVED BY	SCF			DO NOT SCALE THIS DRAWING - DIMENSIONS AND NOTES TAKE PREFERENCE		Stephen C. Fehlhaber, PE Florida P.E. No. 98609	SHEET: AOL-1	
NO.	REVISIONS	DATE									