



# City of Sanibel Transportation Master Plan

Steering Committee Meeting  
May 20, 2026



# Staff and Team Introductions

---



MySanibel™  
*City of Sanibel, Florida*

VOLKERT



**K** KITTELSON  
& ASSOCIATES

247

24-7 CONSULTING



# Today's Agenda

---

## **Public Workshop Update**

- Attendance
- Poll Results
- Key Comments
- Second Public Workshop

## **Project Recommendations**

- Traffic Recommendations
- Wildlife Recommendations
  - Animal Behavior
  - Driver Behavior
- Multimodal Recommendations

## **Next Steps**

# Public Workshop Update

---

**Date:** Thursday, March 26, 2026

**Time:** 6 p.m. to 8 p.m.

**In Person:**

Sanibel Community House

2173 Periwinkle Way, Sanibel, FL 33957

**Hybrid:**

Facebook Live



# Public Workshop Update

---

## In Person

- 66 Signed In
- ~12 didn't sign in
- A lot of questions & comments from the attendees during Q&A

## Facebook Live

Available on  
YouTube



# Poll Results

## Q1 of 3: What mobility and infrastructure idea(s) do you prefer?

Project Idea	Count	Percentage
Fill Shared Use Path Gaps	23	25.00%
Island Circulator	21	22.83%
Water Taxi	13	14.13%
On-Demand Transit	10	10.87%
Elevated Roads	9	9.78%
New Commercial Parking in the Town Center District	8	8.70%
Mobility Hub(s)	7	7.61%
Dynamic Messaging Boards	1	1.09%
Total Mentions	92	100.00%

# Poll Results

## Q2 of 3: What safety improvement(s) do you prefer?

Safety Improvement	Count	Percentage
Safety Improvements and Intersection Improvements	20	34.48%
New Crosswalks	12	20.69%
Traffic Calming	10	17.24%
Pull Offs for Lower Speed Travel	10	17.24%
Streetlights at Major Crosswalks and Intersections	6	10.34%
Total Mentions	58	100.00%

# Poll Results

---

## Q 3 of 3 Did we missing anything? If so, please tell us your idea(s).

### Key Priorities:

- Shuttle services and park-and-ride systems
- Smarter traffic management (reversible lanes, dynamic pricing, real-time signals)
- E-bike and golf cart regulation on shared paths
- Infrastructure for electric vehicles elevated above flood levels
- Coordination with Lee County and regional developments
- Protecting conservation areas while improving transportation

Category	Comment
Traffic & Roadway Management	Reversible lanes from Periwinkle across the causeway during afternoon rush hour (45 min)
Traffic & Roadway Management	Dynamic bridge pricing - charge tolls to exit the bridge
Traffic & Roadway Management	Remove toll plaza and work with Lee County for 2 outbound lanes on causeway
Traffic & Roadway Management	Use 'the gulf' roadways as alternative exit route from island
Traffic & Roadway Management	Establish daily car limit based on road capacity (similar to European cities)
Traffic & Roadway Management	Partner with route mapping services (Google Maps, Waze) for preferred routes
Traffic & Roadway Management	Leverage Flock data for real-time traffic signal control
Public Transit & Shuttles	Trolley/tram services and on-demand pickups for employees, tourists, residents
Public Transit & Shuttles	Park-and-ride system near Punta Rassa to reduce on-island parking issues
Public Transit & Shuttles	Off-island shuttle service from parking areas (e.g., behind Walmart) for day-trippers
Public Transit & Shuttles	Coordinate transit with Grand Calusa (Sanibel Outlets) development
Public Transit & Shuttles	Trolley service may need dedicated on-island parking; consider off-island trolley with Lee County
Bike & Pedestrian Safety	Class 2 and 3 e-bikes negatively impacting safety on Shared Use Path (SUP)
Bike & Pedestrian Safety	Address proliferation of golf carts on roadways
Bike & Pedestrian Safety	Enhanced SUP safety needed, especially on narrow sections
Bike & Pedestrian Safety	Address responsibilities of bikers and pedestrians for safety—not just cars
Environmental & Conservation	Keep Island Inn Road unpaved and not a through road to protect conservation areas
Environmental & Conservation	Implement wildlife crossings (culverts) into infrastructure
Environmental & Conservation	Any SUP improvements should avoid encroachment on conservation land
Environmental & Conservation	If lighting added, use motion-activated systems; consider red lights to minimize impact
Infrastructure & Electrification	Plan for EV charging infrastructure elevated above storm surge/flooding levels
Growth & Development	Address Captiva growth project and proposed roundabout directly
Growth & Development	Incorporate higher-density development plans on Captiva
Traffic Management & Tourism	Concern that improved traffic handling may increase total tourism—how to limit it?
Traffic Management & Tourism	Emphasize solutions that reduce vehicles without reducing visitors ('visit without renting a car')

# Public Workshop Comments

---

## Key Comment Themes

- Roundabout
- Intersection signs for bikers
- Reminder: Reduce curb cuts with shared use path crossings
- Will rerouting the evacuation route to Palm Ridge from Tarpon Bay Road help with both the Town Center and emergency management?
- Mobility & Infrastructure Enhancements for the Town Center Parking

# Public Workshop Comments

## Key Comments Themes

- Build another bridge
- Dedicated bus pick up from Ft. Myers Beach to Sanibel with drop offs at the beaches
- Add a stop sign at Rabbit Road/Sanibel Captiva Road
- LeeTran provide a free, seasonal service to Sanibel
  - Free employee service from areas (Cape Coral / Lehigh / FM) to Sanibel / Captiva

# Second Public Workshop

---

**Date:** Thursday, June 25, 2026

**Time:** 6 p.m. to 8 p.m.

**In Person:**

Sanibel Community House

2173 Periwinkle Way, Sanibel, FL 33957

**Hybrid:**

Facebook Live

# Project Website

---

<https://www.mysanibel.com/631/The-Transportation-Master-Plan-Update>



**We want  
to hear  
from YOU!**

**Send comments/questions to:**

**Consultant Project Manager**

Ned Baier, AICP, Volkert, Inc.

1408 North Westshore Blvd., Suite 600

Tampa, Florida 33607

Ned.Baier@volkert.com

813-245-1618

# Project Ideas Themes

---

Island Circulator

On-Demand Transit

Mobility Hub(s)

Water Ferry/Taxi

New Commercial Parking (Not Beach)

Safety Improvements and Intersection Improvements

New Crosswalks

Fill Shared Use Path Gaps

Traffic Calming (e.g., Wild Mile)

Dynamic Messaging Boards

Elevated Roads (Stormwater Master Plan Projects)

Drainage and Stormwater (Stormwater Master Plan Projects)

Streetlighting Plan (at Major Crosswalks and Intersections)

Pull Offs for Lower Speed Travel

# Traffic Recommendations

## Periwinkle Way and Causeway Boulevard/Lindgren Boulevard

Two options:

- Convert the intersection to a roundabout, as recommended in a previous study
- Conduct a study on a quadrant roadway intersection
  - EB left turn rerouted to Bailey Road, requiring a new connector roadway from Bailey Road to Causeway Boulevard
  - This new road would also accommodate SB right turns

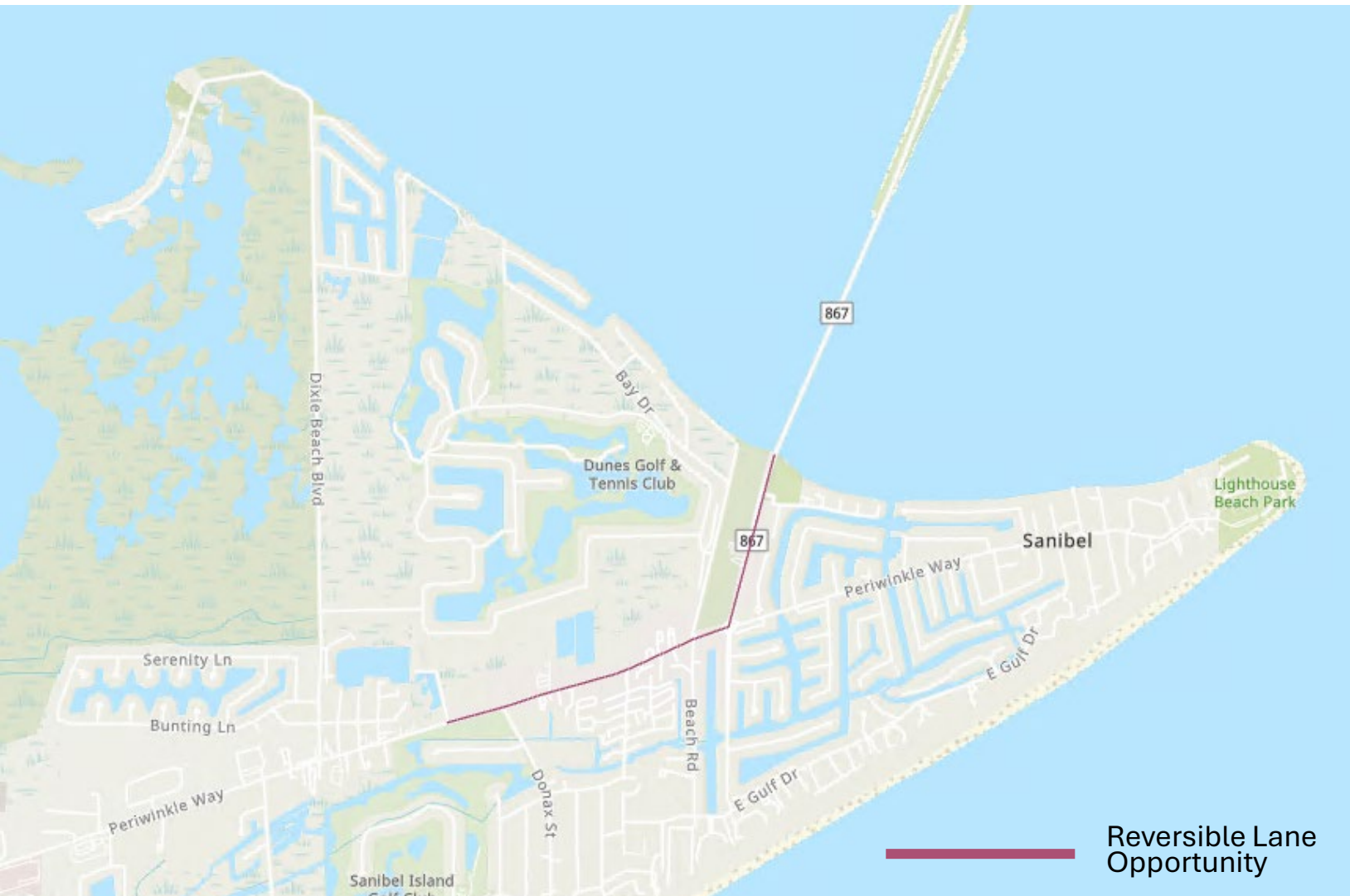


# Traffic Recommendations



Increase southbound left turn capacity by providing a shared through-left lane in addition to the existing exclusive left turn lane

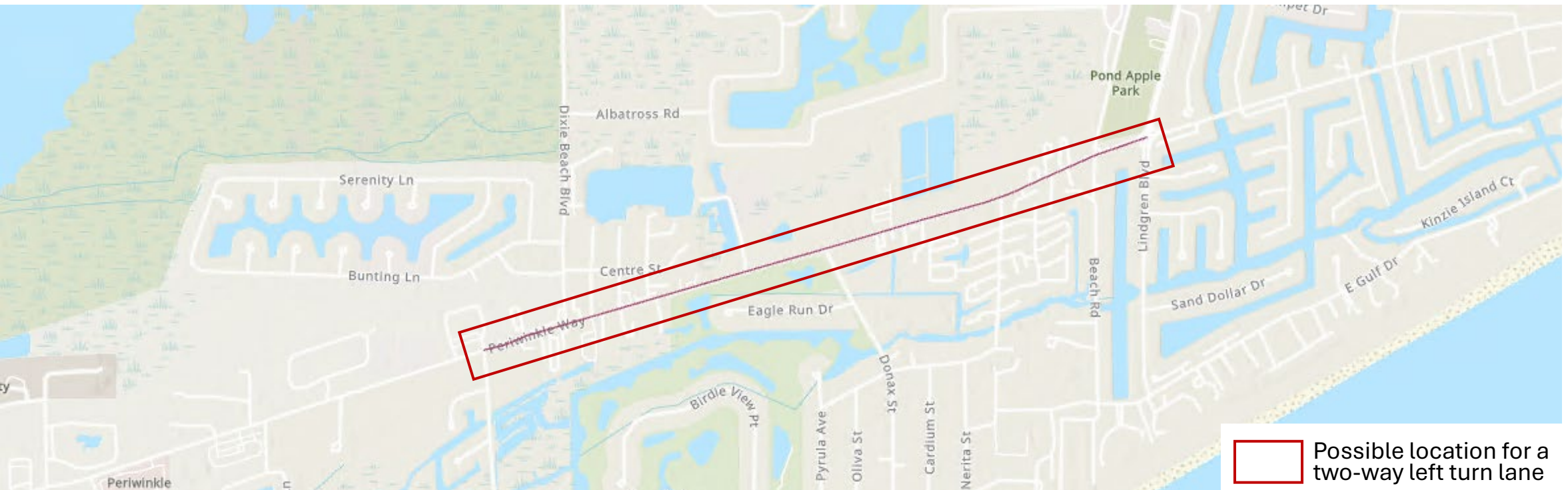
# Traffic Recommendations



Evaluate the possibility of a reversible lane from the island entrance to west of Donax Street

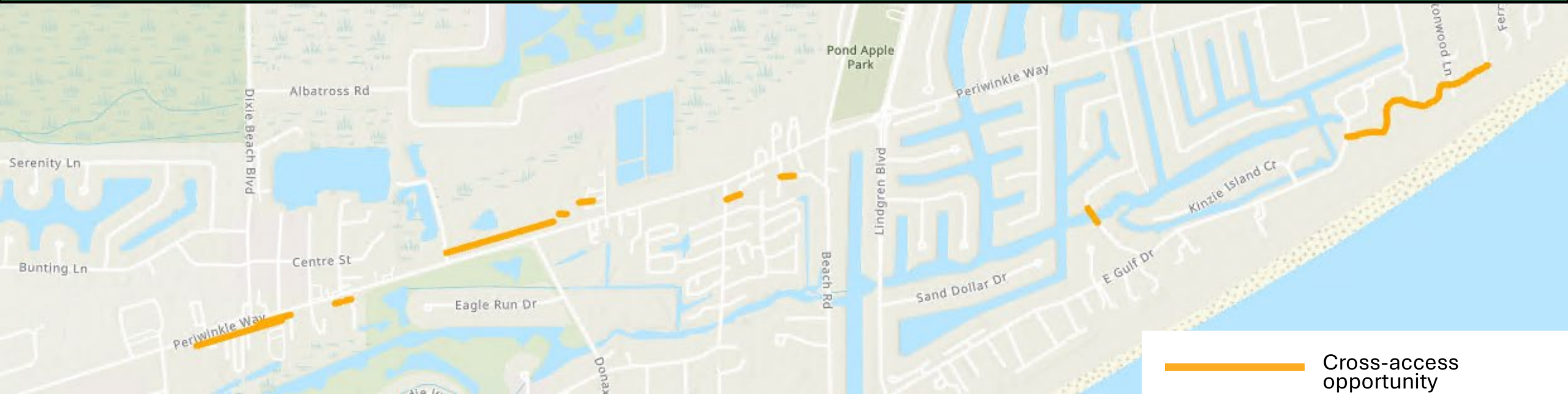
This lane would improve corridor efficiency by aligning capacity with directional demand

# Traffic Recommendations



- Evaluate a possible two-way left turn lane on Periwinkle Way between Causeway Road/Lindgren Boulevard and Casa Ybel Road.
- This lane would improve traffic flow and access to adjacent properties by providing a dedicated space for left-turning vehicles.

# Traffic Recommendations



Explore cross-access opportunities and driveway modifications along and near Periwinkle Way to reduce turning conflicts.

# Traffic Recommendations



Close gaps along Bailey Road and Beach Road, allowing them to serve as parallel facilities to Causeway Boulevard and Lindgren Boulevard

# Safety Recommendations

Conduct a traffic control study to evaluate opportunities to improve safety, focusing on these locations:

- Periwinkle Way
  - @ Causeway Boulevard/Lindgren Boulevard
  - @ Bailey Road
  - @ Casa Ybel Road
  - @ Palm Ridge Road
- Rabbit Road and Sanibel-Captiva Road
- Jerry's and Dixie Beach Boulevard

# Safety Recommendations

- Upgrade existing crosswalks to high-visibility crosswalks
- Evaluate locations for Rectangular Rapid Flashing Beacons (RRFBs) and raised crosswalks
- Install chevron signs and nature-safe lighting at curves along Sanibel-Captiva Road
- Look into speed management strategies such as horizontal and vertical deflection, roundabouts, and splitter islands



Source: N Ivanhoe Blvd and N Orange Ave, Orlando.  
Kittelson & Associates, Inc.



Source: FHWA

# Wildlife Recommendations: Animal Behavior



Remove fruiting and seed-producing vegetation along roadways to reduce food sources that attract animals



Add poles to alter bird flight paths



Install wildlife culverts and tunnels to provide safe crossings for reptiles and amphibians



Add fencing to guide animals to crossing points



American beautyberry; Source: SCCF



Source: John Phelan via Wikimedia Commons

# Wildlife Recommendations: Driver Behavior



Improve nighttime visibility by adding raised retroreflective markers, high visibility striping, and animal-safe lighting



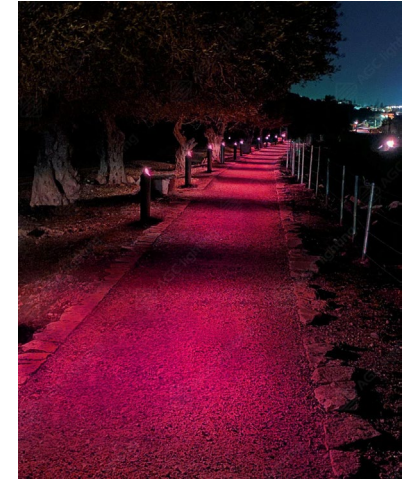
Implement seasonal or nighttime speed reductions in high wildlife activity areas



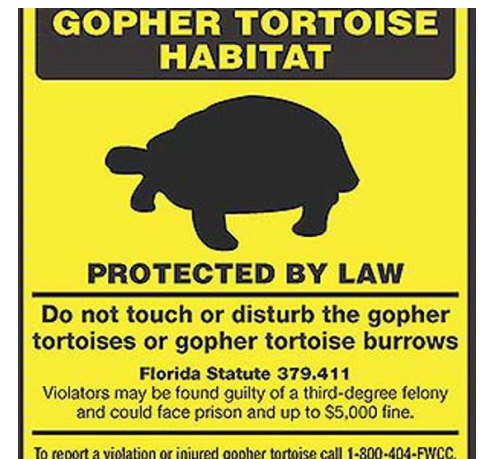
Add signs to encourage reporting of roadkill and inform drivers about seasonal mating periods



Install raised crosswalks and roundabouts for traffic calming



Source: AGC Lighting



Source: Florida Fish and Wildlife Conservation Commission

# Wildlife Recommendations: Animal Behavior



● Wildlife Culvert/Tunnel

● Report Injured Animal Sign

# Wildlife Recommendations: Driver Behavior



Remove Seed/Fruit Trees and Add Poles

Seasonal/Nighttime Speed Limits

Roundabout

Raised Crosswalk

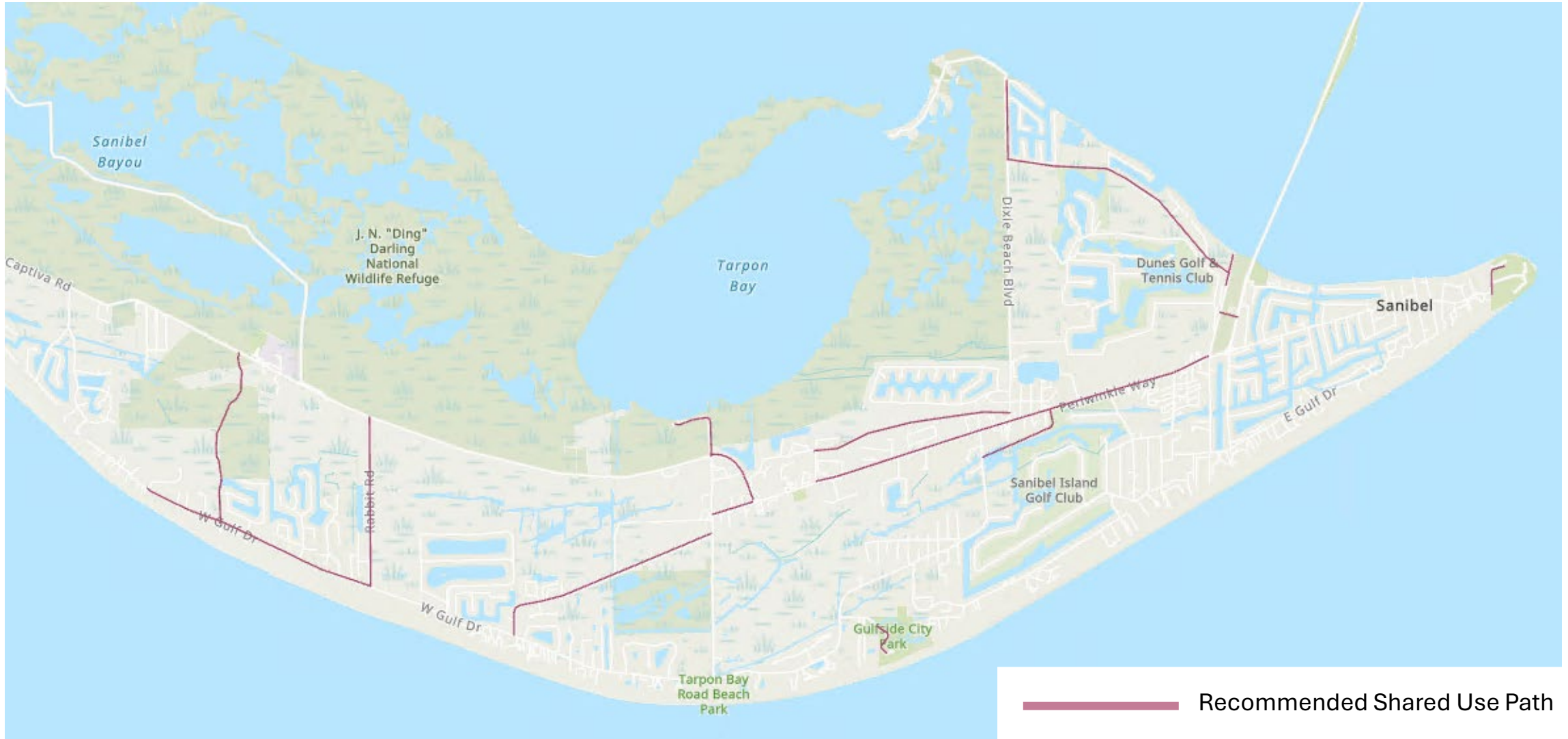
# Multimodal Recommendations: Shared Use Path

- Extend existing Shared Use Paths (SUPs) and implement new path extensions as identified in the SUP Master Plan
- Suggested new path connections not in the Master Plan:
  - Pond Apple Park Trail, between Bailey Road and Causeway Boulevard
  - Island Inn Road, between Tarpon Bay Road and W Gulf Drive
  - US Fish and Wildlife Service, between Sanibel-Captiva Road and W Gulf Drive



Source: Maguire Boulevard, Orlando. Kittelson & Associates, Inc.

# Multimodal Recommendations: Shared Use Path



# Multimodal Recommendations: Transit

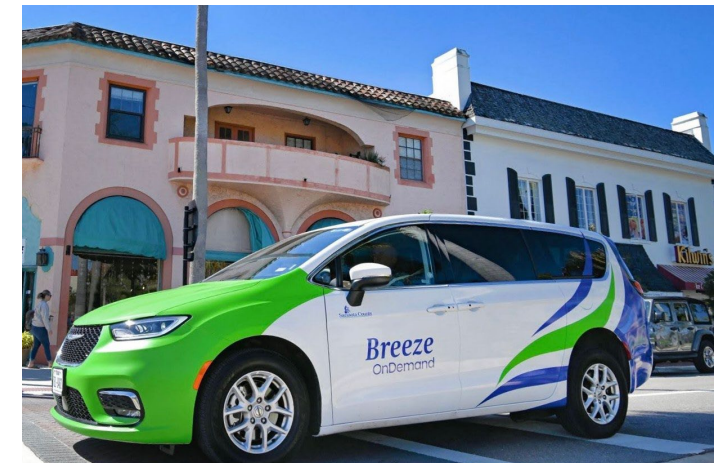
- Conduct a circulator feasibility study to understand demand for transit in Sanibel
  - A smaller transit vehicle stopping at restaurants, retail, grocery stores, beach access, etc.
- Perform a circulator mobility on demand pilot study, possibly partnering with LeeTran



Source: WGCU News



Source: Circuit



Source: Sarasota County

# Multimodal Recommendations: Transit

- If demand exists, consider upgrading service to a trolley
  - The Sanibel Causeway and Periwinkle Way could be expanded to accommodate a dedicated transit lane to alleviate congestion and help with hurricane evacuation



LeeTran Trolley; Source: Visit Florida

# Multimodal Recommendations: Transit

Consider mobility hubs for transfers between transportation modes

- Potential locations: Tarpon Bay Explorers, Rabbit Road and Sanibel-Captiva Road, Sanibel Boat Ramp, Sanibel City Pier, Finnimore's Bike Rentals, Billy's Bike Rentals, Tarpon Bay Public Beach Parking

Conduct a water taxi feasibility study

- Potential locations: Fort Myers Beach, Causeway Beach Park, Tarpon Bay Explorers, Sanibel Boat Ramp, and Sanibel City Pier



# Multimodal Recommendations: Parking

- Remove commercial parking minimums
- Provide
  - Incentives for developers and existing businesses to redevelop their parking lots to accommodate more bike parking, transit shelters, and green spaces
  - Park-and-ride options off the island to encourage visitors to come without their car
- Introduce seasonal tolling on Sanibel Causeway to encourage water taxi use and reduce congestion on the island



Source: Kittelson & Associates, Inc.



Source: Florida's Turnpike

# Next Steps

---

## **What are next steps over the next three months:**

- Map all the projects and descriptions
- Prepare for the second workshop
  - Boards
  - Presentation
  - Second Workshop Poll
- Draft the baseline conditions technical report
- Develop cost estimates
- Prioritize Projects
- Schedule the next Steering Committee, Planning Commission, and City Council Meetings

# Comments and Questions?



Second Steering Meeting  
November 19, 2025