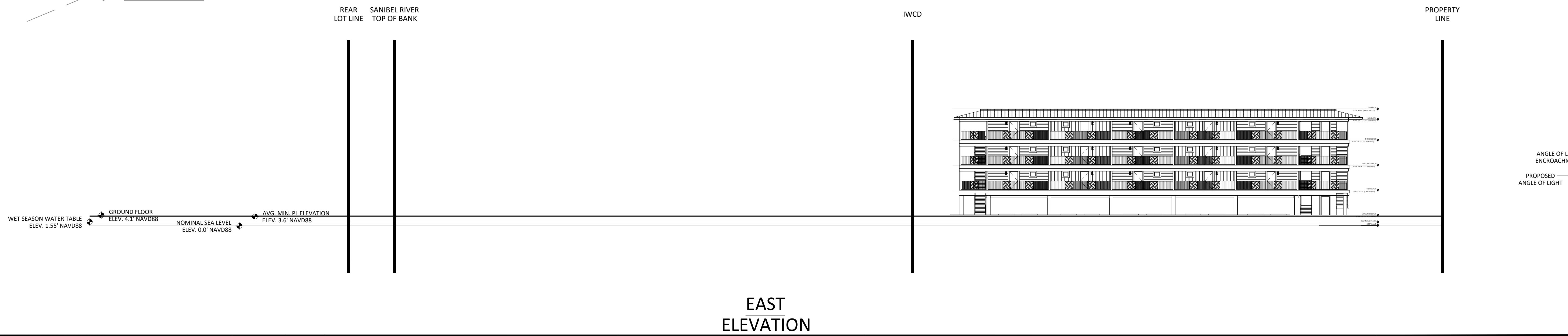
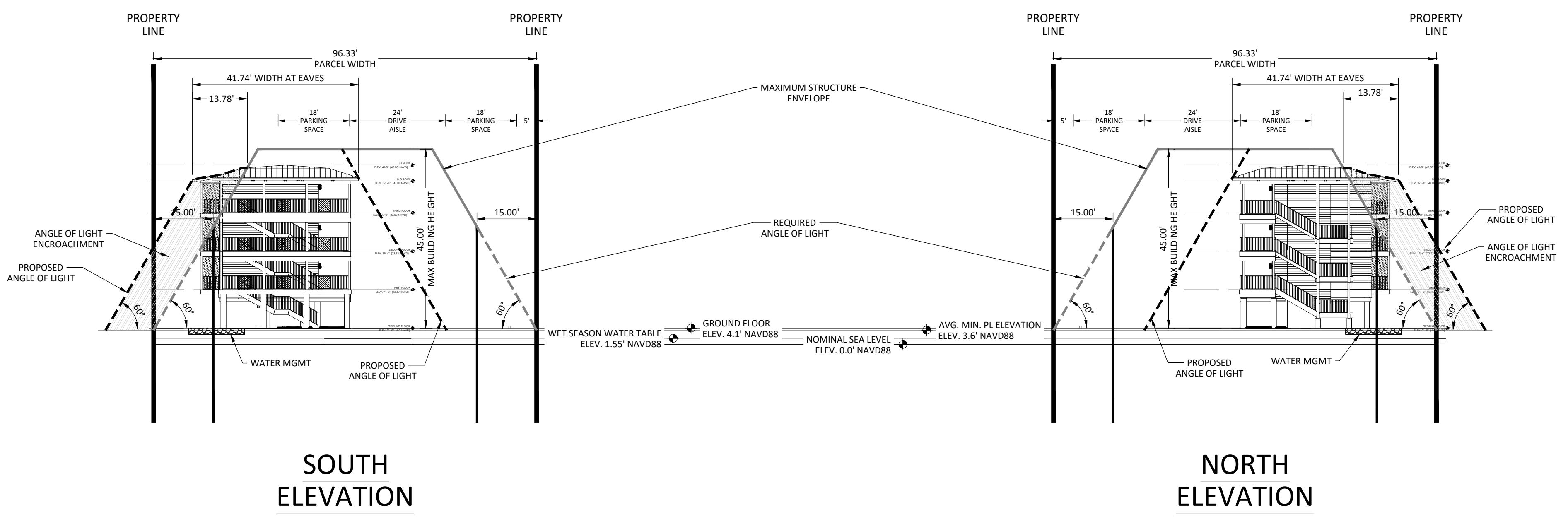
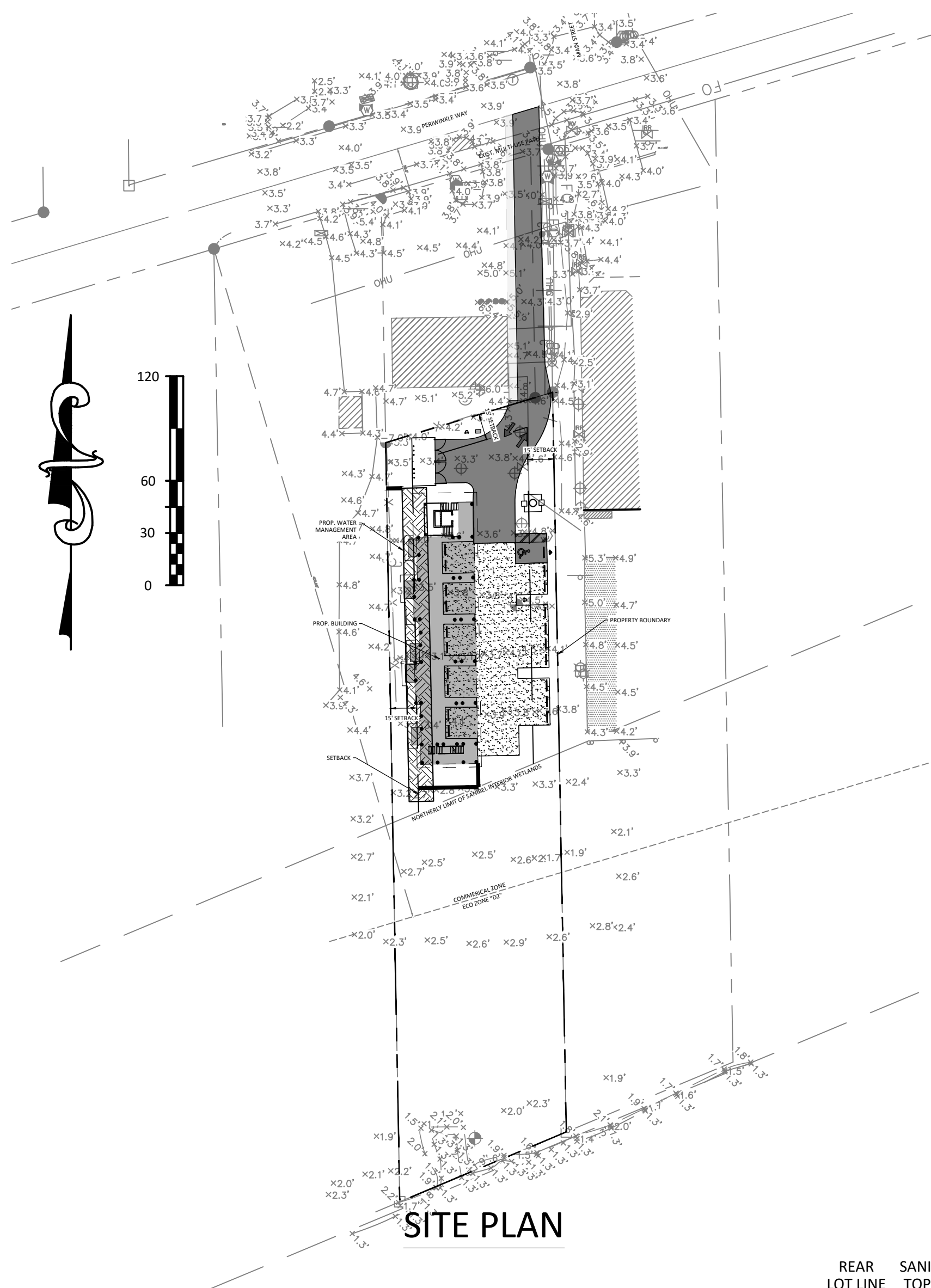


P:\Projects\24\_301\_2401281\_000\_Riverview\_Chr\_at\_1517\_Periwinkle\_Way\_FL\_GA\Fort Myers\06-CAD\Exhibits\Angle of Light\_REV01.dwg Plotted: Mar 04, 2025 11:41am by sfehhaber



DESIGNED BY	SCF	
DRAWN BY	DZ	
CHECKED BY	SF	
APPROVED BY	SCF	
NO.	REVISIONS	DATE

OWNER / DEVELOPER:  
**COMMUNITY HOUSING AND RESOURCES, INC.**  
 2340 PERIWINKLE WAY, SUITE K-2  
 SANIBEL, FL 33957

**DRMP**  
 ENGINEERS • SURVEYORS • PLANNERS • SCIENTISTS

1404 Dean Street Suite 101 - Fort. Myers, Florida 33901  
 Phone: 239.206.5093 WWW.DRMP.COM

CONSTRUCTION PLANS FOR  
**RIVERVIEW CHR AT 1517 PERIWINKLE WAY**  
 LEE COUNTY, FLORIDA

**ANGLE OF LIGHT EXHIBIT**

DO NOT SCALE THIS DRAWING - DIMENSIONS AND NOTES TAKE PREFERENCE

PROJECT NO.:	301.2401281.000
DATE:	JANUARY 2025
SCALE:	1" = 20'
SHEET:	AOL-1

Stephen C. Fehhaber, PE  
 Florida P.E. No. 98609